

# H.264 DVR

*4/8/16-CH Embedded Digital Video Recorder*

V2.4D

## USER MANUAL



# CONTENTS

Notes .....	3
Packaging and Accessories.....	3
Chapter 1 DVR Instruction.....	4
Chapter 2 DVR Introduction .....	5
2.1 Front Panel (only for reference) .....	5
2.3 Remote controller (only for reference).....	10
Chapter 3 Installation .....	11
3.1 HDD Installation .....	11
3.2 Connecting Cameras and Monitor.....	11
3.3 Connecting power .....	11
Chapter 4 Basic Operations .....	12
4.1 Preview interface and user login .....	12
<b>4.1.1 Preview interface</b> .....	12
<b>4.1.2 User Login</b> .....	12
4.2 Overview of main menu.....	13
4.3 Right-click Menu.....	13
4.4 Record file Playback and Backup.....	14
4.4.1 Playback.....	14
4.4.2 Backup .....	16
4.5 PTZ Control .....	17
4.6 System Information .....	18
4.7Main Menu.....	18
<b>4.7.1 Record</b> .....	19
<b>4.7.2 Alarm Setup</b> .....	21
<b>4.7.3 Channel Setup</b> .....	26
<b>4.7.4 Network setup</b> .....	28
<b>4.7.5 User Management</b> .....	33
<b>4.7.6 System Setup</b> .....	34
<b>4.7.7 Display Setup</b> .....	37
<b>4.7.8 Log Search</b> .....	38
Chapter 5 IE and Client Software Login .....	40
5.1 IE Plug-in download and installation .....	40
5.2 IE Login .....	40
5.3 IE interface.....	41
<b>5.3.1 Menu Bar</b> .....	41
<b>5.3.2PTZ Control</b> .....	49
<b>5.3.3 Video Switch</b> .....	49
<b>5.3.4 Playback</b> .....	49
<b>5.3.5 Snapshot</b> .....	49
5.4 Client software login .....	50

Chapter 6 Trouble shooting ..... 50

Appendix 1 Domain name application ..... 51

Appendix 2 Player ..... 56

Appendix 3 System connection diagram ..... 57

## Notes

- ◎ The power supply of this DVR is provided through DC12V adapter, please check the power outlet before installation and ensure it can meet the requirements of adaptor;
- ◎ Do not place the DVR at a place subject to rain or moisture;
- ◎ Do not install the DVR at a place subject to violent vibration;
- ◎ Do not install the DVR at a place subject to direct sunlight, and be far away from heat and high temperature environment;
- ◎ The DVR's back panel shall be 15cm or more away from other objects or wall, to facilitate fan cooling;
- ◎ The DVR shall work under temperature, humidity and voltage according to its technical specifications;
- ◎ The space where DVR installed shall not be stored with corrosive chemicals that may produce volatile gases, to avoid to affect the DVR's life;
- ◎ The DVR shall be installed in a space without much dust, and the environment should be kept clean and tidy;
- ◎ Proper grounding shall be installed during operation;
- ◎ DVR should be installed to ensure the proper connectivity with other devices.

**Please buy harddisk from official channel to meet DVR's long time and much data reading and writing requirements.**

## Packaging and Accessories

### Following parts are included in the package:

- ◎ One IR remote controller
- ◎ A pair of remote controller batteries
- ◎ One piece of product certificate
- ◎ One piece of product warranty card
- ◎ One piece of product instruction
- ◎ Several SATA hard disk data cables (already installed on the DVR main board)
- ◎ Several SATA hard disk power cables (already installed on the DVR main board)
- ◎ One DC12V power adapter
- ◎ Two HDD brackets and several mounting screws.
- ◎ One piece of CD.

# Chapter 1 DVR Instruction

## Specifications

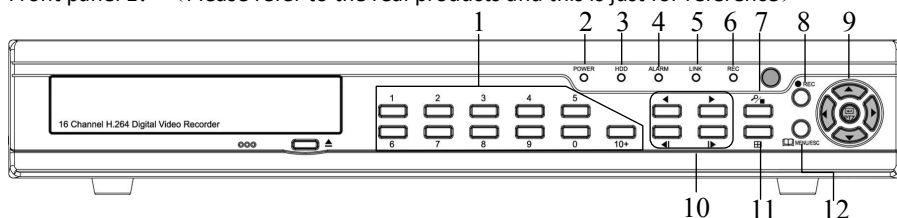
- H.264 compression format, all channels D1 real-time recording;
- Embedded Linux OS, graphical interface, supports mouse, front panel and IR remote control operation;
- Support VGA(1280x1024) and BNC output;
- Support multiple browser, real-time video & audio monitoring , parameter setting and PTZ control;
- Support video audio recording, playback, network transmission
- Multiple recording modes: manual recording, timing recording, alarm recording(motion or sensor input), timing & alarm recording( low frame rate recording in normal, high frame rate recording when alarm ) .
- Supports playback by events categories and accurate time; RS-485 port to support PTZ control;
- Support video signal loss alarm; automatic password protection for the sake of illegal operation;
- Support USB flash drive, E-SATA drive, USB mobile HDD, DVD burner, etc;
- Support SATA HDD, capacity of single one is up to 2TB;
- Support DVR host live view digital zoom and playback zoom;
- Support log record and management
- Support CMS management
- Support 3G USB modem connection and mobile phone view;
- Support build-in DDNS service and third party DDNS;
- Support auto recovery when power off or reset.

# Chapter 2 DVR Introduction

## 2.1 Front Panel (only for reference)

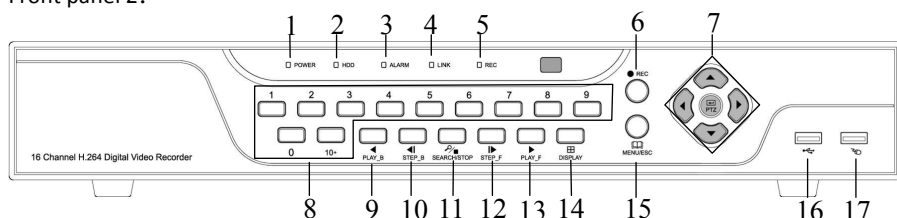
Functions of front panel shown as followed:

Front panel 1: (Please refer to the real products and this is just for reference)



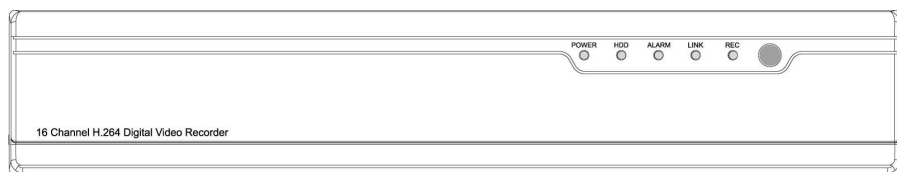
1.Numeric keys 2.Power LED 3.HDD indicator 4.Alarm indicator 5.Network connection indicator 6.Recording indicator 7.Video search&playback stop 8.Recording 9.PTZ control and Direction 10.Video playback control 11.Display mode 12.Main menu&Exit

Front panel 2:

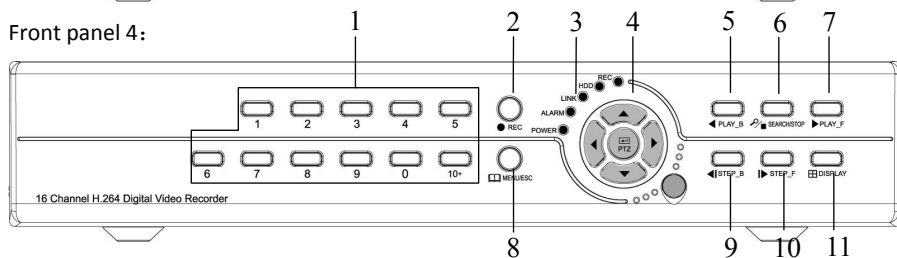


1.Power LED 2.HDD indicator 3. Alarm indicator 4. Network connection indicator 5. Recording indicator 6.Recording 7.PTZ control and Direction 8.Numeric keys 9.Fast reverse play 10.Frame by frame backward play 11.Video search/playback stop 12.Frame by frame forward play 13.Play/Fast forward play 14. Display mode 15.Main menu&Exit 16.USB interface 17.Mouse interface

Front panel 3:

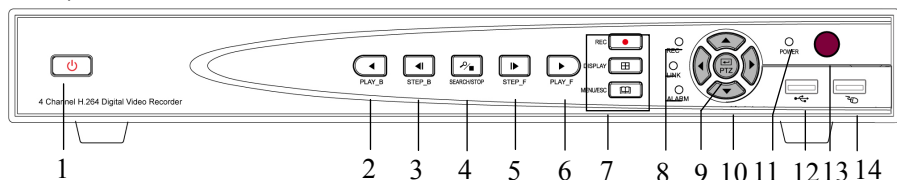


Front panel 4:



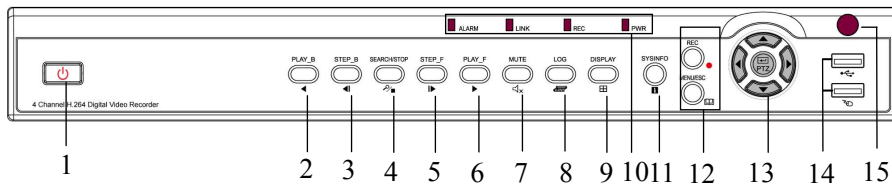
1. Numeric keys 2.Recording 3.POWER: Power LED; ALARM: Alarm indicator; LINK: Network connection indicator; HDD: HDD indicator; REC: Recording indicator 4.PTZ control and Direction 5.Fast reverse play 6.Video search&playback stop 7. Play&Fast forward play 8.Main menu 9. Frame by frame backward play 10. Frame by frame forward play 11.Display mode

Front panel 5:



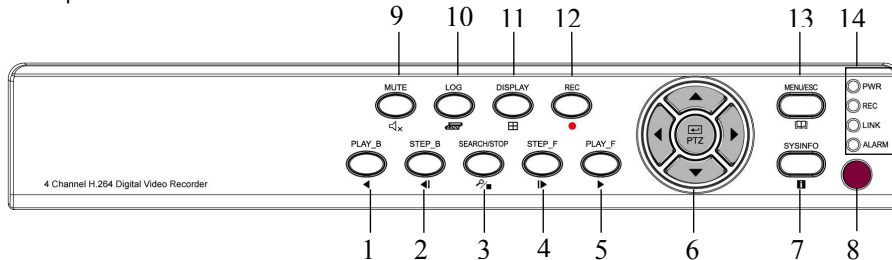
1.Power switch 2. Fast reverse play 3. Frame by frame backward play 4. Video search&playback stop 5. Frame by frame forward play 6. Play&Fast forward play 7.REC:Recording; DISPLAY: Display mode; MENU/ESC: Main menu &Exit 8.REC:Recording indicator; LINK: Network connection indicator; ALARM: Alarm indicator 9.PTZ control 10.Direction keys 11.Power LED 12.USB interface 13.Remote control infrared receiver 14.Mouse interface

Front panel 6:



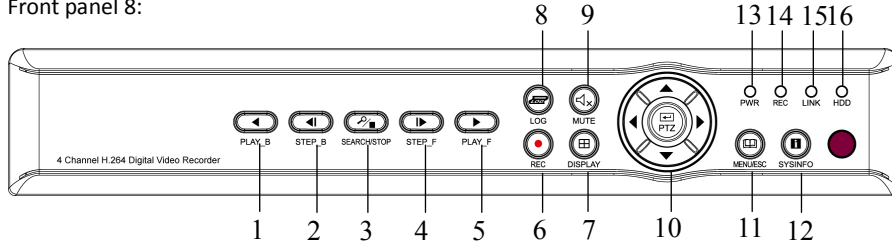
1.Power switch 2.Fast reverse play 3.Frame by frame backward play 4.Video search&playback stop 5.Frame by frame forward play 6.Play&Fast forward play 7.Mute 8.Log 9.Display mode 10.ALARM:Alarm indicator; LINK: Network connection indicator; REC: Recording indicator; POWER: Power LED 11.System information 12.REC:Recording; MENU&ESC: Main menu & Exit 13.Direction and PTZ control 14.USB interface 15.Remote control infrared receiver

Front panel 7:



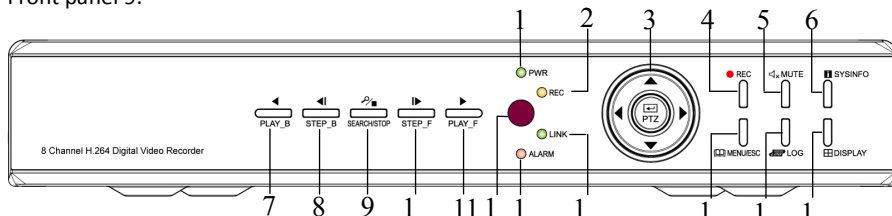
1.Fast reverse play 2.Frame by frame backward play 3.Video search&playback stop 4.Frame by frame forward play 5.Play&Fast forward play 6.Direction and PTZ control 7.System information 8.Remote control infrared receiver 9.Mute 10.Log 11.Display mode 12.Recording 13.Main menu & Exit 14.PWR:Power LED; REC: Recording indicator; LINK: Network connection indicator; ALARM: Alarm indicator

Front panel 8:



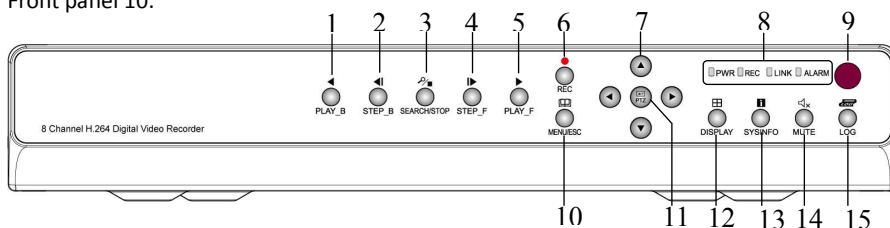
1.Fast reverse play 2.Frame by frame backward play 3.Video search&playback stop 4.Frame by frame forward play 5.Play&Fast forward play 6.Recording 7.Display mode 8.Log 9.Mute 10.Direction keys; PTZ control & Enter 11.Main Menu & Exit 12.System information 13.Power LED 14.Recording indicator 15.Network connect indicator; 16.HDD indicator

Front panel 9:



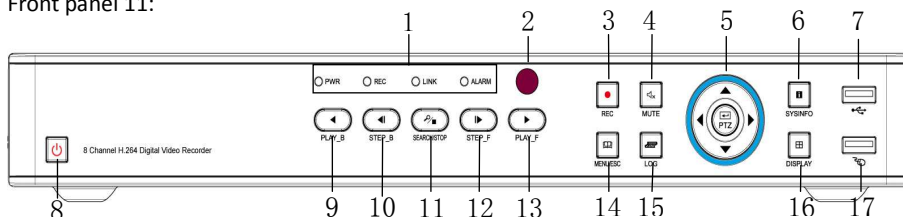
1.Power LED 2.Recording indicator 3.Direction keys; PTZ control & Enter 4.Recording 5.Mute 6.System info 7. Fast reverse play 8. Frame by frame backward play 9. Video search&playback stop 10. Frame by frame forward play 11. Play&Fast forward play 12. Remote control infrared receiver 13.Alarm indicator 14.Network connect indicator 15.Main menu & Exit 16.System log 17.Display mode

## Front panel 10:



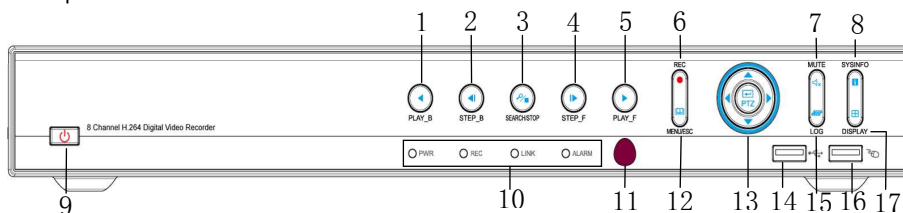
1.Fast reverse play 2. Frame by frame backward play 3. Video search&playback stop 4. Frame by frame forward play  
5. Play&Fast forward play 6.Recording 7.Direction keys 8.Power LED; Recording indicator; Network connect indicator;  
Alarm indicator 9. Remote control infrared receiver 10.Main menu & Exit 11.PTZ control & Enter 12.Display mode  
13.System info 14.Mute 15.System log

## Front panel 11:



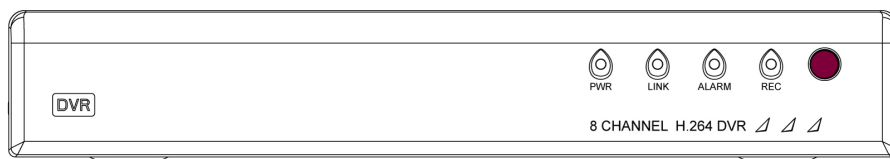
1. Power LED; Recording indicator; Network connect indicator; Alarm indicator 2. Remote control infrared receiver 3.  
Recording 4.Mute 5. Direction keys; PTZ control & Enter 6.System info 7.USB interface 8.Power switch 9. Fast  
reverse play 10. Frame by frame backward play 11. Video search&playback stop 12. Frame by frame forward play  
13. Play&Fast forward play 14.Main menu & Exit 15.System log 16.Display mode 17.Mouse interface

## Front panel 12:

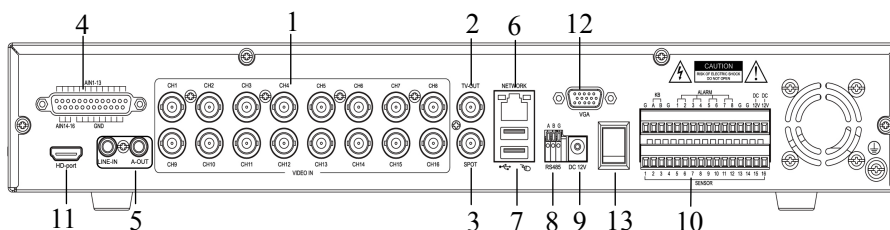


1.Fast reverse play 2. Frame by frame backward play 3. Video search&playback stop 4. Frame by frame forward play  
5. Play&Fast forward play 6.Recording 7.Mute 8.System info 9.Power switch 10. Power LED; Recording indicator;  
Network connect indicator; Alarm indicator 11. Remote control infrared receiver 12.Main menu & Exit 13. Direction  
keys; PTZ control & Enter 14.USB interface 15.System log 16.Mouse interface 17.Display mode

## Front panel 13:



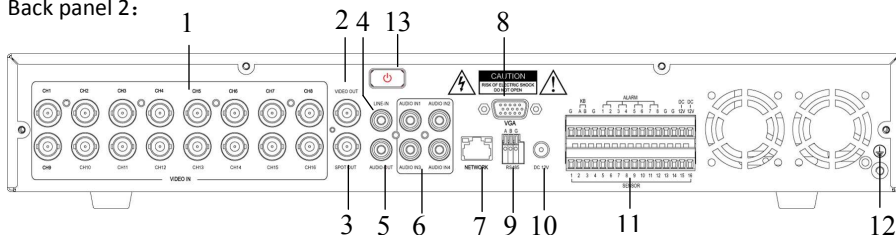
## Back panel 1:



1.16CH video input 2.Main video output 3.Auxiliary video output 4.16CH Audio input 5.Intercom input ; audio  
output 6.Network interface 7.USB interface 8.RS-485 9.Power input 10.Keyboard interface ; 4CH alarm output ;  
Auxiliary DC12V ; 16CH alarm input 11.HD output 12.VGA output interface 13.Power switch

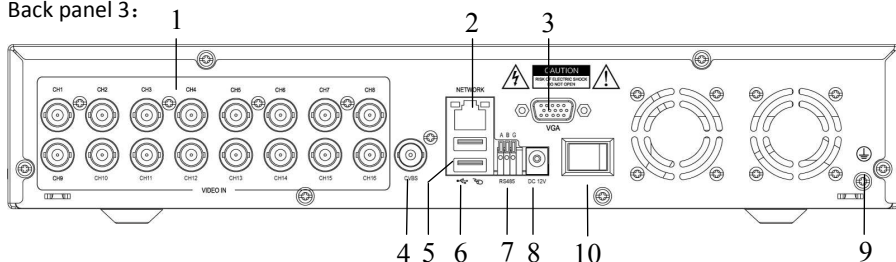


Back panel 2:



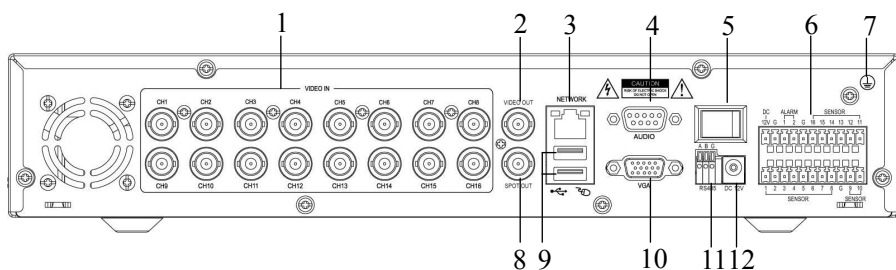
1.16CH video input 2.Main video output 3.Auxiliary video output 4.Intercom input 5.Audio output 6.4CH audio input 7.Network interface 8.RS-485 9.VGA output interface 10.Power input 11.Keyboard interface ; 4CH alarm output ; Auxiliary DC12V 16CH alarm input 12.Grounding terminal 13.Power switch

Back panel 3:



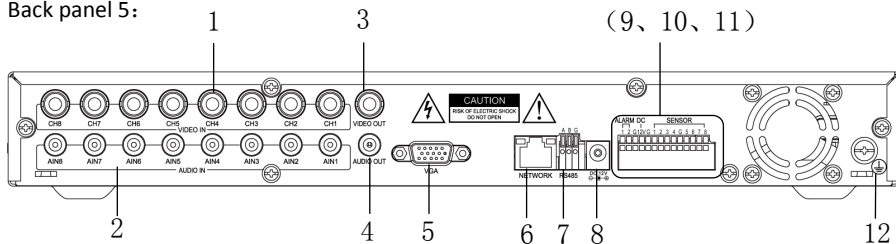
1.16CH video input 2.Network interface 3.VGA output interface 4.Video output 5.USB interface 6.Mouse interface 7.RS-485 8.Power input 9.Grounding terminal 10.Power switch

Back panel 4:



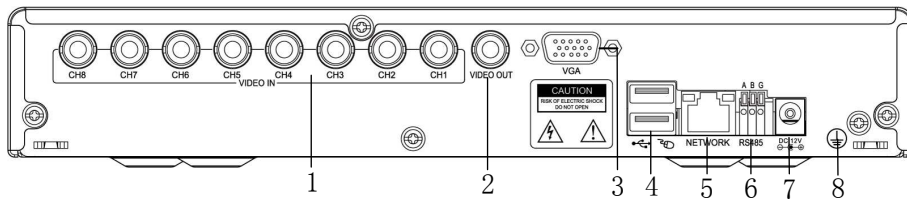
1.16CH video input 2.Main video output 3.Network interface 4.Audio output 5.Power switch 6.Auxiliary DC12V ; 1CH alarm output ; 16CH alarm input 7.Grounding terminal 8.Auxiliary video output 9.USB interface 10.VGA output interface 11.RS-485 12.Power input

Back panel 5:



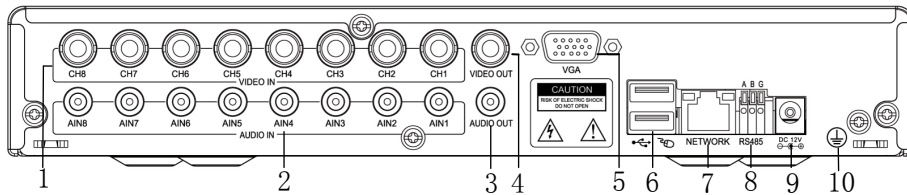
1.8CH video input 2.8CH audio input 3.Video output 4.Audio output 5.VGA output interface 6.Network interface 7.RS-485 8.Power input 9.1CH alarm output 10.Auxiliary DC12V 11.8CH alarm input 12.Grounding terminal

Back panel 6:



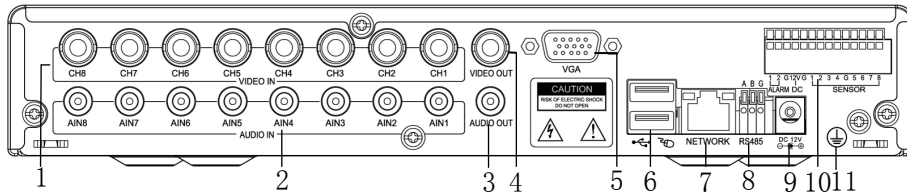
1.8CH video input 2.Video output 3.VGA output interface 4.USB interface 5.Network interface 6.RS-485 7.Power input 8.Grounding terminal

Back panel 7:



1.8CH video input 2.8CH audio input 3.Audio output 4.Video output 5.VGA output interface 6.USB interface 7.Network interface 8.RS-485 9.Power input 10.Grounding terminal

Back panel 8:



1.8CH video input 2.8CH audio input 3.Audio output 4.Video output 5.VGA output interface 6.USB interface 7.Network interface 8.RS-485 9.Power input 10.1CH alarm output ; Auxiliary DC12V ; 8CH alarm input 11.Grounding terminal

## 2.3 Remote controller (only for reference)



	System off
	Mute
1-9	Channel selection: 1-9
0	Combination of 0 and 10 switch to channel 10
10+	Combination of 0-6 and 10+ switch to 10-16 respectively
	Display switch
▲	For the focus transfer of plug-ins in the menu's interface; move up
▼	For the focus transfer of plug-ins in the menu's interface; move down
PTZ	Enter PTZ interface/Enter
◀	For the focus transfer of plug-ins in the menu's interface; move leftwards
▶	For the focus transfer of plug-ins in the menu's interface; move rightwards
SYSINFO	View basic information of system
MENU/ESC	Pop up right click menu
●	Manual record
■	Stop
▶	Fast forward
◀	Fast reverse
▶▶	One frame fast forward
◀◀	One frame back forward
LOG	Enter log search interface
F1	Spare key
SPOT	Switch spot channel(spot + 1~9.)

# Chapter 3 Installation

## 3.1 HDD Installation

- (1) Open the upper cover of DVR.
- (2) Connecting HDD wire and power wire to the main board.
- (3) Put the upper cover back.

Notice: Don't take out the HDD when the DVR power on.

## 3.2 Connecting Cameras and Monitor

Connect camera cable to video input of DVR, and attach the video output cable from DVR to monitor via BNC connector (refer to section 2.2-Rear Panel ). If the camera is PTZ dome, connect RS485 A(+) & B(-) to the port of DVR respectively.

## 3.3 Connecting power

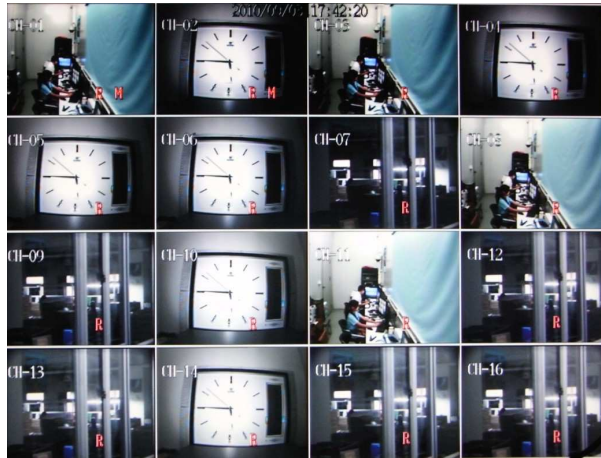
Please use the supplied power adapter to connect DVR.

# Chapter 4 Basic Operations

## 4.1 Preview interface and user login

### 4.1.1 Preview interface

After turning on the system will enter main interface. Picture 4-1 is the main interface defaulted by system. Once there are video inputs, the interface will display live images from the channel; if not video input, interface is defaulted blue. In the main interface, double-click any channel, the image will be maximized to full screen, by double-click again, image will come back to multiple display mode; clicking the right button of mouse then will enter Pop-up Menu, move the cursor to select menu, then click the left button to enter the selected menu or carry out the functions.

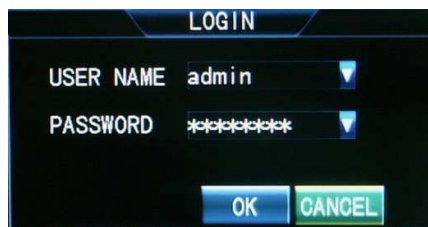


Picture 4-1

### 4.1.2 User Login

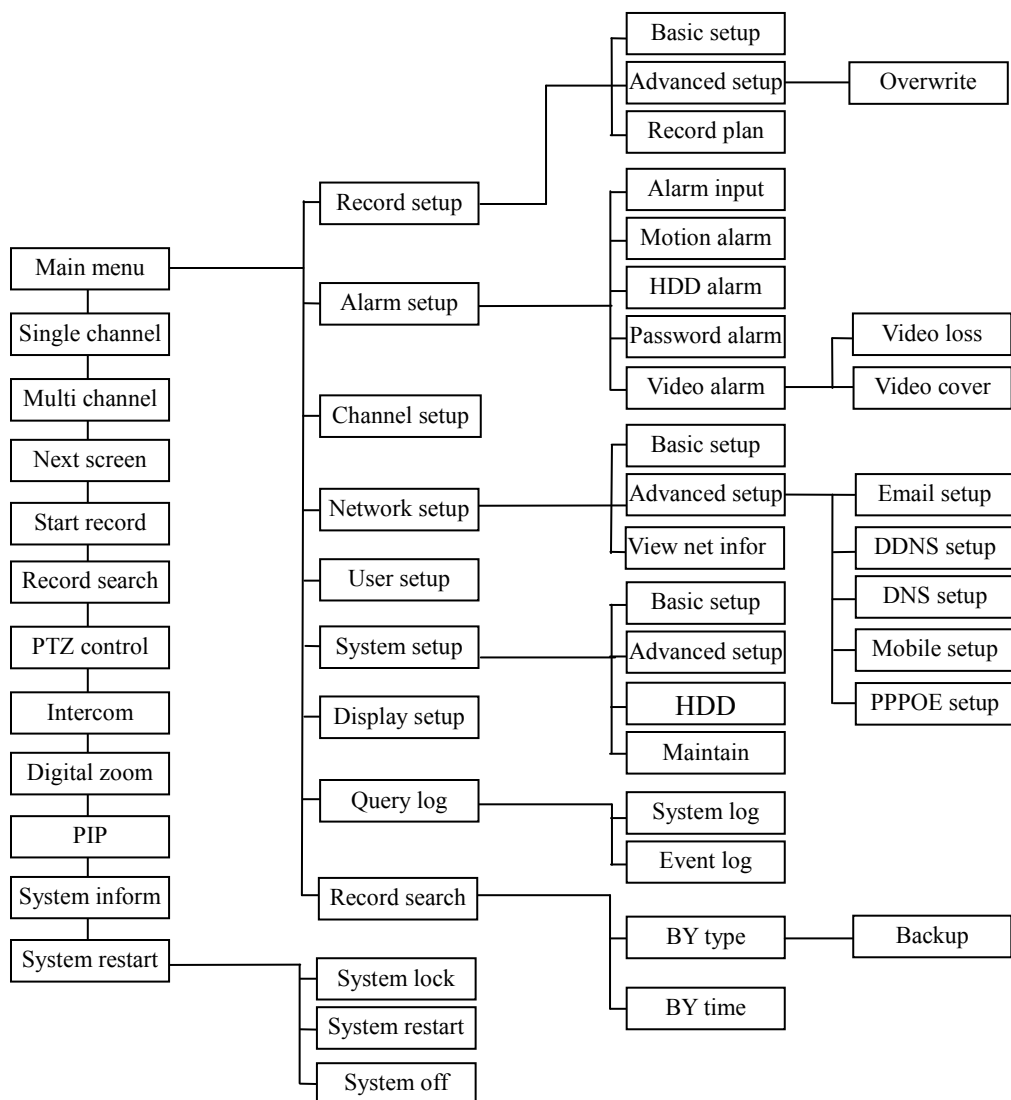
Click the Menu Key to pop up the information of the User Login, as shown in Image4-2. The default user name: admin; Password: 00000000

If any users to be added or passwords to be modified, please refer to the 'User Management' in Chapter 4.7.5



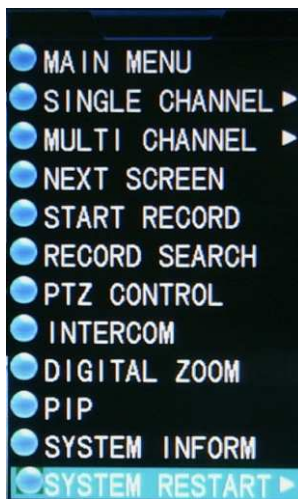
Picture 4-2

## 4.2 Overview of main menu



## 4.3 Right-click Menu

After start-up of the system, click right button of mouse in the main interface, through pop-up main menu, user could perform parameter setting and operate on the main menu, e.g., main menu, video search, PTZ control, manual record, switch of single channel and multi-channel, shown as picture 4-2.



Picture 4-3

## 4.4 Record file Playback and Backup

### 4.4.1 Playback

Please click 'Record Search' in the quick menu(reference to 4.3) to enter the following interface:



Picture 4-4

Two way to Playback:

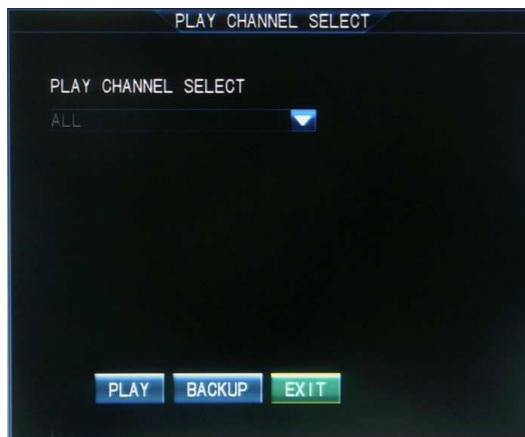
- 1)Search by time, enter the date& time in the 'By Time' Column, then click 'play' button to play the record file of this time. If no record file in this period, there will be a system note 'File open error'
- 2)Search By type, enter the record types in the 'By Type' Column, there are five options of the types: ALL/Manual/Schedule/Alarm/Schedule& Event, then click 'search' button to display the file list as shown as the following image





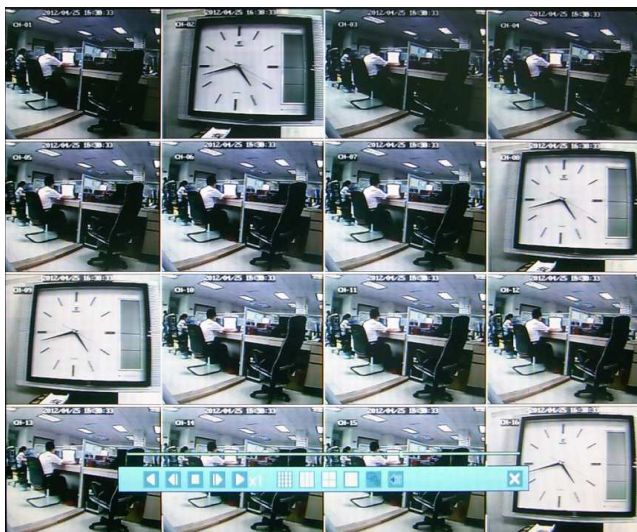
Picture 4-5

Select one of the files in the list, pop up the following note:



Picture 4-6

Click Playback to enter the play format as shown in the following image:





Picture 4-7

This DVR supports the 16 channel playback simultaneously, or you can also double-click one channel to operate the single-channel play. Among the function icons of the PLAY Control Bar under the PLAY window, there is fast backward, step backward, Stop, step forward, fast forward, 16 channel split, 9 channel split, four channel split, single channel display, mute, half-closed, when the anchor of the mouse is static for 10 seconds, the PLAY Bar will hide automatically.

#### 4.4.2 Backup

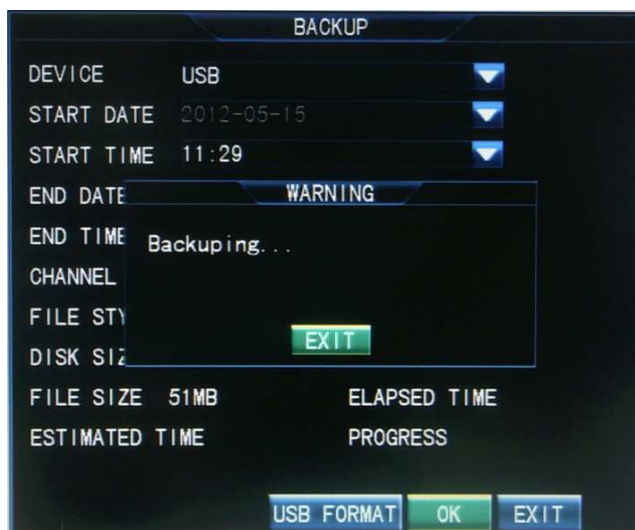
Enter the Record file list interface as shown in Image4-5

File Backup by single file and multiple file: Tick ☒ in the small column on the right side of the interface, then click the 'File Backup' at the bottom of the interface. If the 'Single File Backup' is selected, pls click one of the files in the list as shown in image4-6, then click “File Backup” to enter the interface as shown in image4-8



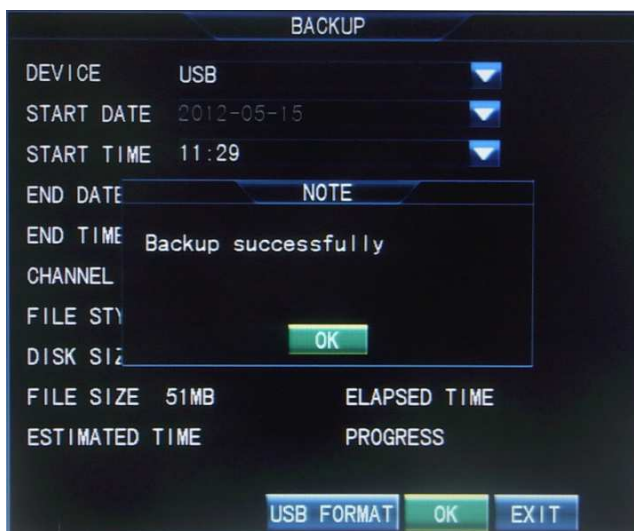
Picture 4-8

Backuping:



Picture 4-9

Backup successfully:



Picture 4-10

### Setting Method:

(1) Set the backup device, file size, channel and some other functions in the recording backup interface

Backup device: Display of the backup device information start

Date and time of the file: setup of start date and time of the backup file

End date and time of the file: setup of end date and time of the backup file

(2) Format selection of the back-up files: press the arrow keys to select format of the back-up file. The H264 files are supported. Then press the arrow keys to click the "OK" button, then backup starts. (The H264-format file could only be opened and played with our client software)

(3) The capacity of external device (and remaining capacity) could be automatically detected and displayed at the bottom of the window. Meanwhile, the file size and back-up time could be evaluated automatically. The usage time and backup speed could also been on display.

---

#### Notice

1. The evaluated remaining time(estimated time) may be a bit different from the actual time.
  2. To identify U disk or USB disk, the back-up device should be formatted by FAT32 format.
- 

## 4.5 PTZ Control

Click the right mouse button→ select the "PTZ control" in the right button menu to enter PTZ control interface.

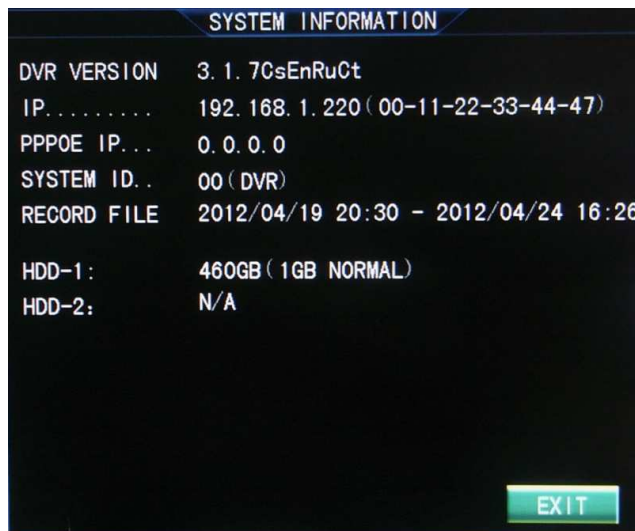
After entering the PTZ control interface, it is very convenient to control the PTZ. The PTZ control interface is as shown in picture 4-35. The speed of PTZ could be set. The arrow buttons is used to control the direction of the high-speed ball movement, press "+", "-" button to control zoom, focus, iris.



Picture 4-11

## 4.6 System Information

Press ESC key→ select the "system information" in the right mouse button menu to enter the system information interface as shown in picture 4-36



Picture 4-12

System information interface mainly indicates the DVR Version, web address, system ID, the information of record files and the information of the built-in HDD.

## 4.7 Main Menu

In the main interface, right-click to pop up the menu, click "main menu" (shown as picture 4-3), where could set the following items: Record, Alarm, Channel, Network, User Management, System, Record Backup and Log Search setting.



Picture 4-13

## 4.7.1 Record

### 1) Basic setting

Click [Main menu]→ [Record] to enter [record] menu (Shown as picture 4-12)

There are options of Resolution, Image Quality, Frame Rate, Audio, Pre- record available in the interface.

- a. There are 3 items of D1, half-D1, CIF available for resolution. The D1 resolution can record the clearest video. but it will occupy more HDD space. Frame rate is the number of frame per second, if less than 25 fps, image is not successive, but could save minor stream and decrease data size. There are four standards, PAL: 5/6/12/25 frame and NTSC: 5/6/15/30 frame.
- b. Recording is the audio channel relative to video record. If without input audio source, it doesn't need to set up this item. Through left-click or front panel button to enter the interface of record, pop-up the menu, select the audio channel of 1-16 .If choose [Close], stop recording.
- c. Pre-record: when one channel in timing alarm, the number of fps between the beginnings of the channel is triggered by alarm and end of event alarm, two options: 2 s, 6 s.
- d. Copy to channel: after the setting of parameter of one channel, parameters of other channels are accordance with the first one channel, and then could use this item to copy the parameters of first one channel to other channels.



Picture 4-14

## 2) Advanced setting

To get to the ADVANCED SETUP, left click to the interface or via DISPLAY of front panel to other tags. There are two options: Override & Time and Date override

### Setting method:

**Note: Please note that PTZ also functioned as Enter.**

- (1) Overwrite: Press the arrow key to select [Overwrite], popup dropdown menu with PTZ, and then press the arrow key to choose YES/NO. If select YES, this will make the new record file will overwrite the former record file when the capacity of HDD is full. If select NO, the new record file won't be stored in HDD when the capacity of HDD is full.
- (2) Time and Date Overwrite: Press the arrow key to select [Time and Date Overwrite], popup dropdown menu with PTZ, and then press the arrow key to choose YES/NO. If select YES, this will display time and date in the video playback, if select NO, the time and date won't be displayed in the video playback.



Picture 4-15

## 3) Record Plan

"Record Plan" includes setup of Off, Schedule Record, Alarm Record, and Schedule & Alarm Record.

Record Plan has seven days: Monday, Tuesday, Wednesday, Thursday, Friday, Saturday and Sunday. There are 24 time periods and one hour per time period.

#### Setting method:

- (1) Press the arrow key to "Channel" and enter PTZ to popup the interface.
- (2) Move cursor to any options: such as Off, Schedule Record, Alarm Record, and Schedule & Alarm Record, press PTZ to tick "√".
- (3) Move cursor to any time options; press the combination of right & left keys and PTZ to select time area.
- (4) If apply all settings to other channels, just move cursor to "Copy to" and press PTZ to copy the settings to one channel or all channels.
- (5) Move cursor to "Enter" and PTZ to save above settings.



Picture 4-16

## 4.7.2 Alarm Setup

### 1) Alarm Input

#### Setting method:

- (1) Designated Event Channel: Press the arrow key to select channel, popup dropdown menu with click of PTZ, and then press the right and left keys to choose channel. Channel 1-16 and all channels are available, while the default channel is channel 1. After selecting channel, enter PTZ to apply the selected channel.
- (2) Set the sensor type: Press the arrow key to enter [Sensor Type], popup dropdown menu with click of PTZ, and then choose "Normal on" or "Normal off", finally, press PTZ to apply the selected options. Normal off refers to that the external alarm circuit is closed at ordinary times, and open when there is an alarm. Normal on refers to that the external alarm circuit is open at ordinary times, and closed when there is an alarm.
- (3) Alarm record channel setup: Move the cursor to [Record], press PTZ to enter the setting interface, using the PTZ to choose alarm record channel or choose all channels.
- (4) Alarm output setup: The device for the alarm output while set event trigger. The default is No. In this interface, press the arrow key to choose action port and PTZ to enter, and press OK to exit.
- (5) Buzzer setup: To check DVR whether enable beep when set event trigger. Select "Buzzer", press PTZ to open dropdown menu and arrow key to choose ON/OFF. If select ON, the buzzer is activated; if select OFF, the

buzzer is invalid. When the event is finished, the buzzer is off automatically.

(6)PTZ Action Setup: When the event is triggered, the preset position will be linkaged. Event is triggered that PTZ will be moved to front preset position, and move PTZ to back preset position after event is ended.

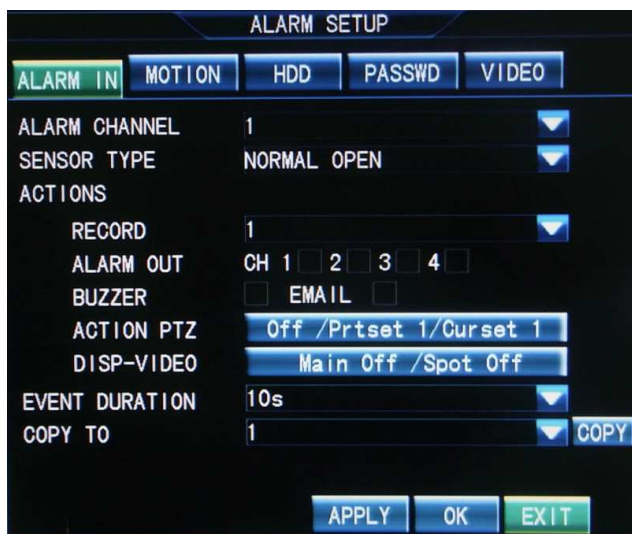
- (a) Enter PTZ interface, press the arrow key to [Channel], and popup dropdown menu with click of PTZ, moving arrow key to select channel, finally enter PTZ to apply the selected channels.
- (b) Move cursor to [front preset position], press PTZ to popup menu and arrow key to choose preset position number and press Enter. Move cursor to [back preset position], press PTZ to popup menu and arrow key to choose preset position number and press Enter. At last, press Enter to save parameters.

(7)The display screen pop-up has two types: Main display switch channel and SPOT switch channel. Main display switch channel setup is the channel displays that popup automatically in the display screen of event trigger setup.

- (a) Enter display screen interface, press arrow key to select main display switch channel, popup the menu with click of PTZ, and select channel number( options of 1 to 16 channel are available, the default is OFF. Setting OFF, event trigger won't linkage alarm screen displayed in main display screen automatically. Enter PTZ to apply the selected channels. When event work time is ended, main display screen will automatically restore pre-split screen of main display screen.  
SPOT switch channel setup is the automatic popup channel screen when the setting event is triggered.
- (b) Enter display screen interface, press arrow key to select SPOT switch channel, popup the menu with click of PTZ, and select channel number( options of 1 to 16 channel are available, the default is OFF. Setting OFF, event trigger won't linkage alarm screen displayed in SPOT display screen automatically. Enter PTZ to apply the selected channels.

(8)Event duration means the duration of alarm when the start of event setup.

- (a) Press the arrow key to select [Event Duration], popup dropdown menu with PTZ, and then press the arrow key to choose working time. There are following options:  
(3/5/10/20/30/60/120/180/300/600/900/1200 S) , while the default is 10 seconds.
- (b) Finally, press ON/OFF to apply selected time with PTZ.



Picture 4-17

## 2) Motion Detection



In motion detection, except the setup of sensitivity and MD area, settings of other functions as same as alarm input, users could follow the former sections. Next mainly introduce the setting of sensitivity and MD area.

Sensitivity refers to corresponding sensitivity in motion detection when the event record mode is motion detection or alarm record.

**Setting method:**

- (1) Press the arrow key to select [Sensitivity], popup dropdown menu with PTZ, and then press the arrow key to choose [Sensitivity].
- (2) Enter PTZ to apply the selected sensitivity.



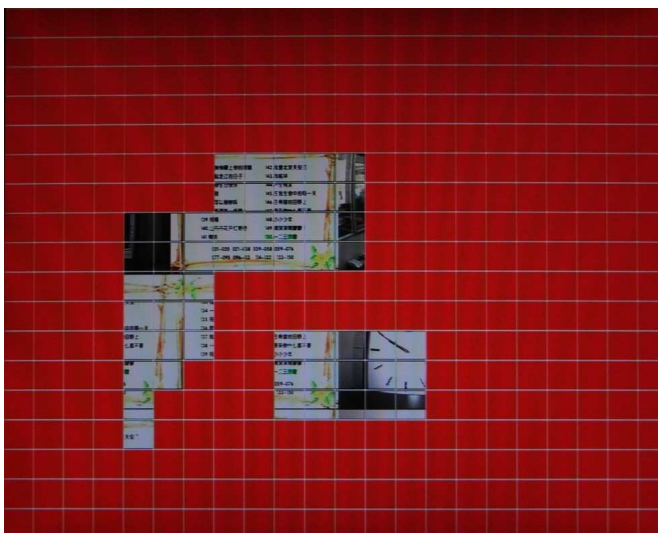
Picture 4-18

**MD Area Setup**

MD Area refers to corresponding MD area in motion detection when the event record mode is motion detection or alarm record.

- (1) Press the arrow key to select [MD Area], popup dropdown menu with PTZ, and then press the arrow to choose some part, and enter the interface with the click of PTZ. (Shown as picture 4-17)
- (2) Press the arrow key to select the starting point of motion detection and PTZ to apply the choice, and move the cursor to choose desired motion area, then enter "ESC" to exit the interface, at last, press "Enter" to save above settings.





Picture 4-20

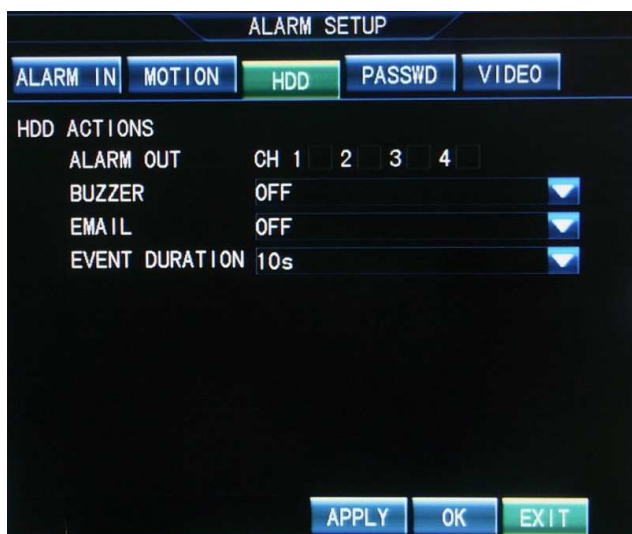
### 3) HDD Error

Click DISPLAY to "HDD Error", shown as picture 4-19.

HDD mistake is that when there is mistake of HDD, DVR will alarm to remind the user.

#### Setting method:

- (1) Press the arrow key to select [Alarm Output], enter PTZ to choose action port, and press "Enter" to exit.
- (2) Buzzer setup: To check DVR whether enable beep when set event trigger. Select "Buzzer", press PTZ to open dropdown menu and arrow key to choose ON/OFF. If select ON, the buzzer is activated; if select OFF, the buzzer is invalid. When the event is finished, the buzzer is off automatically.
- (3) Event duration means the duration of alarm when the start of event setup. Press the arrow key to select [Event Duration], popup dropdown menu with PTZ, and then press the arrow to choose working time. There are following options: (3/5/10/20/30/60/120/180/300/600/900/1200 S), while the system default is 10 seconds. Finally, press ON/OFF to apply selected time with PTZ.
- (4) Setting the above parameters, press the arrow key to Enter and PTZ to save the parameters.

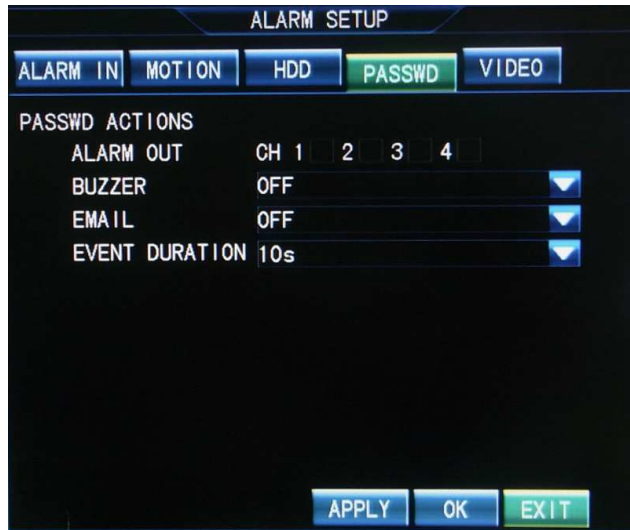


Picture 4-20

#### 4) Password Error

Click DISPLAY to "Password Error ", shown as picture 4-19.

Password Error means that the current user or other users input wrong password, DVR will alarm to remind the user.



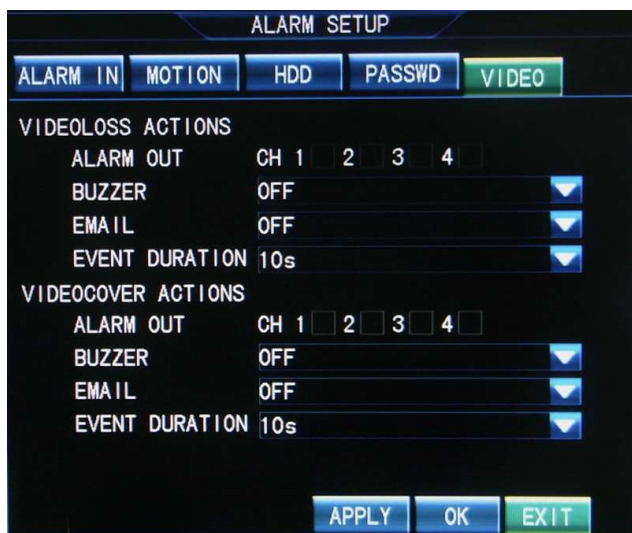
Picture 4-21

#### 5) Video Loss

Click DISPLAY to "Video Loss", shown as picture 4-20.

Video Loss: When there is video loss of one channel, DVR will alarm to remind the user.

- (1) Press the arrow key to select [Alarm Output], enter PTZ to choose action port, and press "Enter" to exit.
- (2) Buzzer setup: To check DVR whether enable beep when set event trigger. Select "Buzzer", press PTZ to open dropdown menu and arrow key to choose ON/OFF. If select ON, the buzzer is activated; if select OFF, the buzzer is invalid. When the event is finished, the buzzer is off automatically.
- (3) Event duration means the duration of alarm when the start of event setup. Press the arrow key to select [Event Duration], popup dropdown menu with PTZ, and then press the arrow to choose working time. There are following options: (3/5/10/20/30/60/120/180/300/600/900/1200 S) , while the system default is 10 seconds. Finally, press ON/OFF to apply selected time with PTZ.
- (4) Setting the above parameters, press the arrow key to Enter and PTZ to save the parameters.



Picture 4-22

### 4.7.3 Channel Setup

Click "Main Menu" → "Channel Setup" , the interface is shown as picture 4-21. There are following options: Channel number, Channel name, PTZ protocol, Baud rate, PTZ address code and color setup.

1. Channel number: Press the arrow key to select "Channel number", and press PTZ to apply the selected channel.
2. Channel name: Press the arrow key to select "Channel name" and PTZ to popup the edit menu( Chinese, English, Numeric, Special character can be input as channel name), if input numeric or lower case, just use the arrow key to select directly; if input capital letters, user should press "Caps" of edit menu to switch to capital input; if input special character, press the "," of edit menu to switch to special character input; if input Chinese, press "En" of edit menu to switch to Chinese input. 16 characters are supported.
3. PTZ Protocol: This protocol is used to realize the communication with PTZ. In order to control PTZ cameras, PTZ should be connected with PTZ port of DVR. Press the arrow key to select "PTZ Protocol" and PTZ to popup the dropdown menu, with the click of arrow key to choose appropriate protocol and enter PTZ to apply the selected protocol.  
There are a number of protocols could be used: PTZ-NULL, LG LPT-A100L, DRX-502A(Demo), PELCO D, NK-97CHE, SAMSUNG SCC-641, PELCO P, SJ2819RX, SAMSUNG MRX-1000, Techwin SPD1600/2500, Wonwoo Eng: SBO-201P1, Panasonic WV-CS850.
4. Baud Rate: Press the arrow key to select [Baud Rate], popup dropdown menu, and then press the arrow key to choose appropriate baud rate, at last, enter PTZ to apply the selected baud rate.
5. PTZ ID: Press the arrow key to select [PTZ ID], popup dropdown menu with click of PTZ, and then press the arrow key to choose the number, finally enter PTZ to apply the selected number. PTZ IP ranges from 0-255.



Picture 4-23

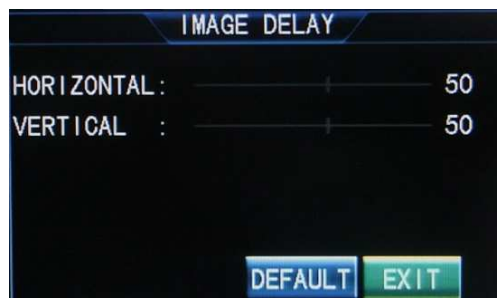
6. Color Setup: Through the setup of color, bright contrast, saturation, hue to set the display of channel. Press the arrow key to select [Color setup] and PTZ to enter the interface. With the click of arrow key to choose bright, contrast, saturation, hue respectively and use the right and left keys to adjust number. After the adjustment, press ESC to exit the interface, in the end, press the arrow key to select "enter"

and

save the settings with the click of PTZ. (shown as picture 4-22)



Picture 4-24



Picture 4-25

## 4.7.4 Network setup

Enter [main menu]→ [network setup], the interface shown as picture4-23.

- 1) **Basic setup:** Connection Mode, IP address, Netmask , Gateway, NTP Server, HTTP Port, Media Port, Intercom Port.

- (1) Connection Mode: Dynamic IP and Static IP

Static IP refers to the IP address, Netmask and Gateway assigned manually, this requires that we're going to apply for an IP address from network administrator. Dynamic IP refers to IP address assigned by the Dynamic Host via DHCP, you don't need to set IP, Gateway or Netmask manually.

Setting method: Press the arrow key to select [Connection mode], popup dropdown menu of PTZ, and then press the arrow key to choose the connection mode with PTZ key.

- (2) IP/ GATEWAY /NETMASK Setup

Only when the Static IP is selected as network connection mode, then IP/GATEWAY/NETMASK could be activated.

Setting method: Move down to IP, and press the PTZ to popup the edit menu, enter the desired IP. Setup of Netmask and Gateway is same way.

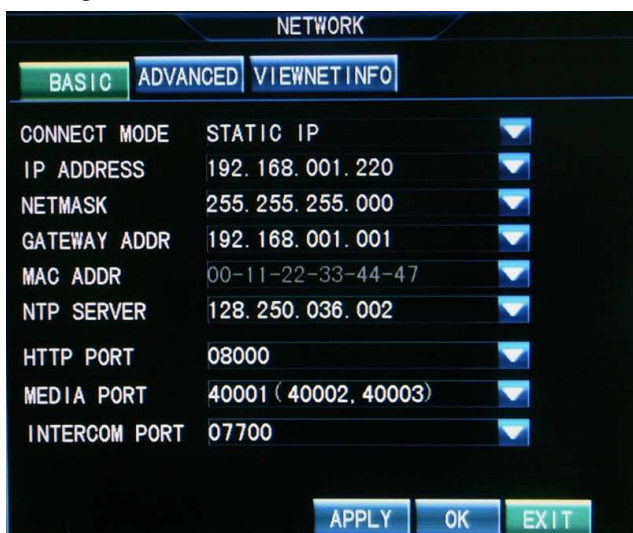
- (3) NTP Server address setup: Set the address of time correction server is to realize DVR's time synchronization.

Setting method: Press arrow key to select "NTP Server" → enter PTZ→ select NTP Server→ enter the address in the interface, finally, click "Enter".

- (4) Port Number Setup: HTTP Port, Media Port and Intercom Port.

Setting method: Press the arrow key, enter "HTTP Port", and press the PTZ to popup the edit menu, input port number ( between 1024-65535) , finally, click "Enter". Setup of Media Port and Intercom Port is the same way.

**Note:** When forwarding the ports in the WAN setting with the UPNP function option off, then four ports need to be forwarded. The defaulted setting are as below: 8000, 40001, 40002, 40003.



Picture 4-26

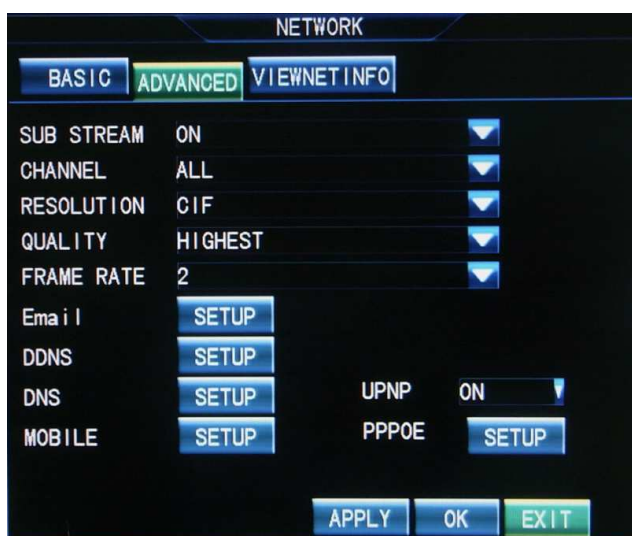
## 2) Advanced Setup

Press "DISPLAY" to switch to "Advanced Setup".

In this interface, there are following options: code stream, select channel, resolution, quality, frame rate, Email setup, DDNS setup, DNS setup. In the former chapters have introduced how to select channel and set resolution, image quality, frame rate, therefore, the following sections only introduce the setup of code stream, Email, DDNS, DNS, Mobile port and UPNP.

### a) Minor stream

Can set network transmission resolution, when the network is not connected well, can low the resolution and frame rate.



Picture 4-27

### b) Email Setup is shown as the picture 4-25:

- Press the arrow key to select [email] and enter the interface with PTZ, and then tick "√" with the combination of arrow key & PTZ, open the [Email] menu.
- Input SMTP port number, SMTP server, Sender address and password, recipient's address respectively, at last, press Enter and PTZ to save above settings.



Picture 4-28

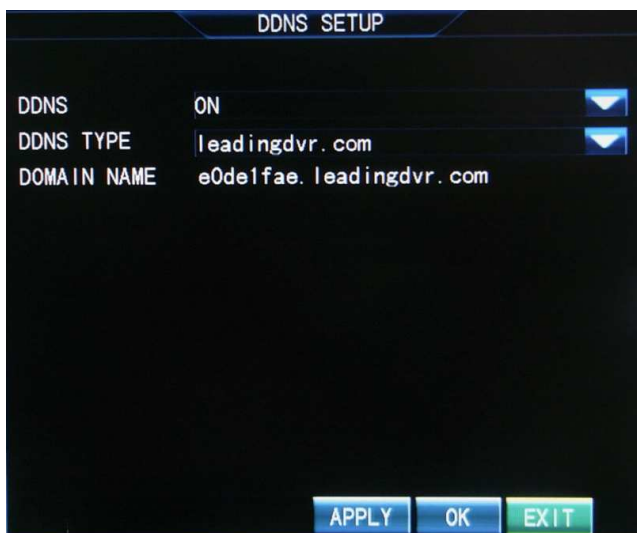
c) **DDNS Setup ( shown as picture 4-26)**

**Setting method:**

- a) Press the arrow key to select [DDNS] and enter the interface with PTZ, and then tick "√" with the combination of arrow key & PTZ, open the [DDNS] menu.
- b) Set DDNS type, server address, domain name, user name, password and password confirmation respectively, at last, press Enter and PTZ to save above settings.



Picture 4-29



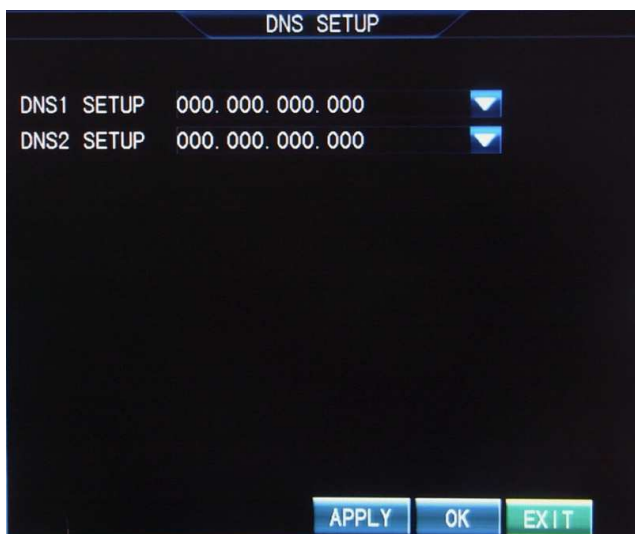
Picture 4-30



**d) DNS setup as shown in picture 4-27**

**Setting Method**

- (1) Press the Arrow keys to select the DNS Setup button, click PTZ button to enter DNS screen, then press the Arrow keys to select DNS1 or DNS2. Press PTZ button to enter edit menu, then set the DNS.
- (2) Click "OK" button after the setup of DNS, then press PTZ button to save the above settings.



Picture 4-31

**e) Mobile**

Enter the interface, you can setup the mobile port .



Picture 4-32

**f) UPNP**

When the UPNP function is on (UPNP function on the router end is also on of the router setting), then the DVR will reflect the port and IP into the router automatically.



g) PPPOE

PPPOE SETUP

PPPOE	ON	▼
DIAL MODE	WIRED	▼
NAME	pppoe user name	▼
PASSWD	*****	▼

APPLY OK EXIT

Picture 4-33

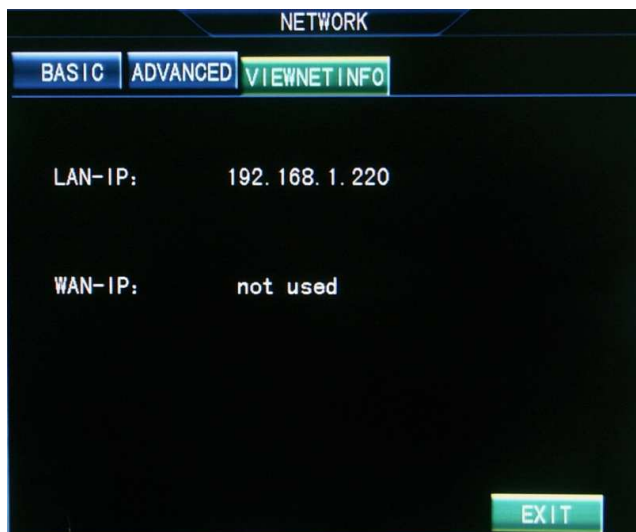
PPPOE SETUP

PPPOE	ON	▼
DIAL MODE	WCDMA	▼
DIAL	*99#	▼
NAME	gdata	▼
PASSWD	*****	▼
APN	public.msk	▼

APPLY OK EXIT

Picture 4-34

### 3) VIEWNETINFO



Picture 4-35

## 4.7.5 User Management

Enter "Main Menu"→ "User Management", the menu screen as shown in picture 4-28  
User Manage is referred as the adding, modifying and deleting of users in addition with the setup of users' grades.

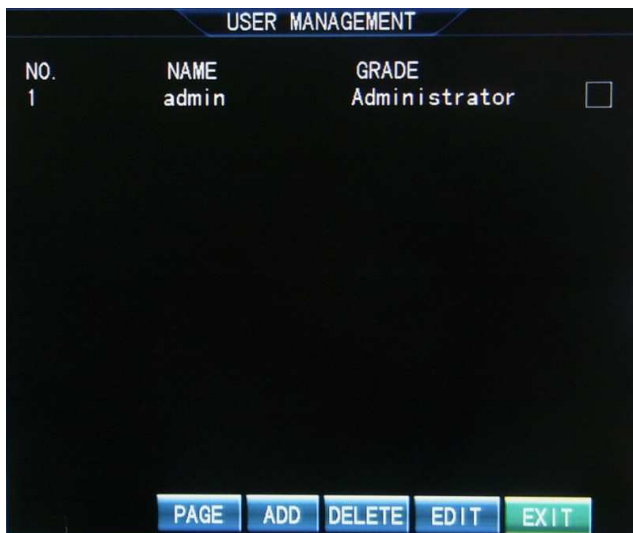
### Setting Method:

- (1) Press Arrow keys to click Add button, then press PTZ button, set the name, password and grades of the added user.
- (2) Click OK button after adding the new users, press PTZ button to save the set parameters.
- (3) If one of the users is to be edited or deleted, press the Arrow Keys to select this user, then press PTZ key to set the user as the selected status. Move the cursor to the User-delete button or edit button, press PTZ button to delete or edit users.

---

Notice	In the user management interface, you could only add 15 users at most.
--------	--

---



Picture 4-36

## 4.7.6 System Setup

Click "Main Menu" → "System Setup" to enter System Setup menu interface as shown in Picture 4-29

### 1) Basic Setup

#### Setting Method:

- (1) System Date Format: YYYY/MM/DD,DD/MM/YYYY,MM/DD/YYYY

Setting Method: press the Arrow Key to select the System Date Format Column, press PTZ button to pop up the drop-down menu, then press the Arrow Key to select the appropriate format, press PTZ button to apply the selected format.

- (2) Time Zone

Setting Method: Press the Arrow Key to select the Time Zone Column, press PTZ Button to pop up the drop-down menu, then press the Arrow Key to select the appropriate Time Zone, press PTZ button to apply the selected time zone. (At present, this function is not available)

- (3) System Date Setup

Setting Method : Press the Arrow Key to select the System Date Setup Column, press PTZ Button to pop up the drop-down menu, then press the Arrow Key plus PTZ button to set the date, press Enter button on the edit menu to apply the selected date.

- (4) System Time Setup

Setting Method : Press the Arrow Key to select the System Time Setup Column, press PTZ Button to pop up the drop-down menu, then press the Arrow Key plus PTZ button to set the time, press Enter button on the edit menu to apply the selected time.

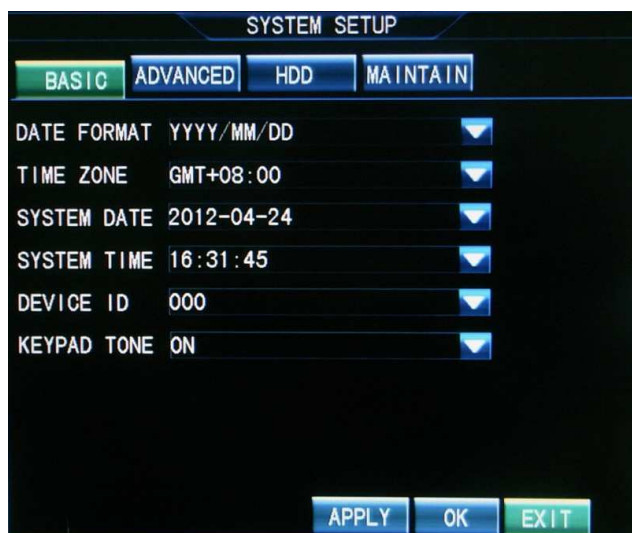
- (5) Device ID:

When using special keyboard or IR remote control to dominate several DVRs, the machine ID is needed. (At present, this function is not available in remote control)

### Setting Method :

Press the Arrow Key to select Machine ID Column, press PTZ button to pop up the drop-down menu, then press the Arrow Key plus PTZ key to set the ID, press the "Enter" key to apply the selected ID. The range of Device ID is 0-255.

After the setting of the parameters, press the Arrow Key to click OK button, then press PTZ button to save the above settings.



Picture 4-37

## 2) Advanced Setup

Press DISPLAY key to switch into the interface of Advanced Setup.

Advanced Setup Interface indicates three functions: System Language, Format Selection, Auto lock

(1) System Language: set the system display language

Setting Method : press the Arrow Keys to select system language column, press PTZ key to pop up the drop-down menu, then press the Arrow Keys to select the system display language, press PTZ button to apply the selected language. The system supports the following languages: Simplified Chinese, Traditional Chinese, English, Korean and so on.

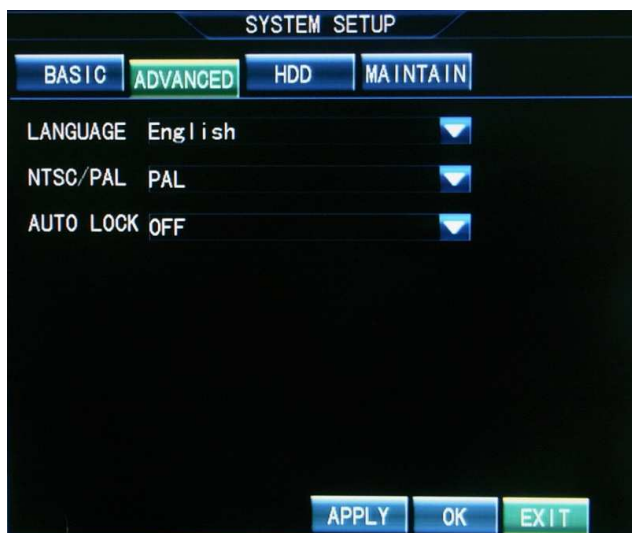
(2) Format Selection: NTSC and PAL

Setting Method : press the Arrow Keys to select format column, press PTZ key to pop up the drop-down menu, then press the Arrow Keys to select the format, press PTZ key to apply the selected format.

(3) Auto lock: the system would be automatically locked when having no operation of system function during a particular period. (At present, this function is not available)

### Setting Method:

Press the Arrow Keys to select auto lock column, press PTZ key to pop up the drop-down menu, and then press the Arrow Keys to select the intervals. The intervals are optional (0/1/3/5/10/30/) minutes, the default setting is 0 minute.



Picture 4-38

### 3) Hard disk management

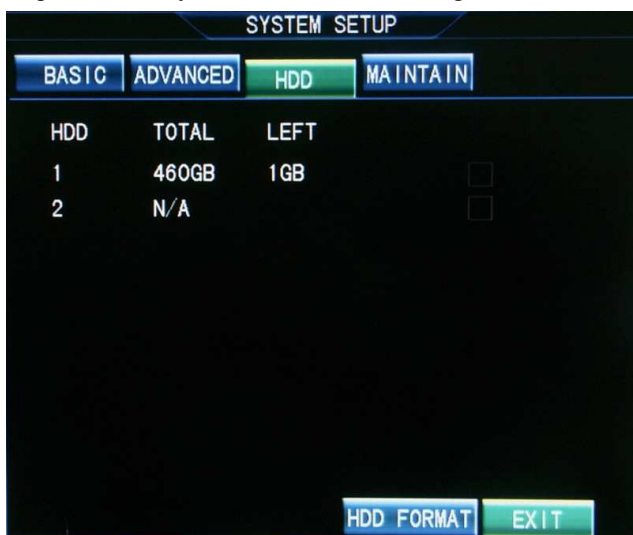
Press DISPLAY key to switch to the Hard Disk management interface.

Hard disk management interface mainly displays hard disk information (Hard disk Status, total capacity and remaining capacity) and the operation of hard disk formatting.

#### Hard Disk Formatting

##### Setting Method:

Press the Arrow Keys to select hard disk format and PTZ key to tick ☒, press the Arrow Keys to click the hard disk format button, then press PTZ key to execute the formatting.



Picture 4-39

4) System Maintain

Press DISPLAY key switching to the system maintain interface as shown in Picture 4-32

The system maintain interface mainly deal with the updating of DVR. Upgrade indicates: System BIOS, System Image, and System APP.

Note	<div>1) The power supply should not be interrupted when updating; you could also not restart the machine during this period; or the machine can not start.</div> <div>2) The lower left of the screen would appear "Upgrading Successfully" after the successful upgrade. Then you can restart the machine.</div> <div>3) Unplugging and plugging the USB disk is forbidden during the updating process, or the device could not continue updating or start.</div>
------	--



Picture 4-40

4.7.7 Display Setup

Click "Main Menu"→ "Display Setup" to enter Display Setup menu interface as shown in Picture 4-33

The display setup interface mainly indicates: Main display switching interval (Main Interval), SPOT switching interval(Spot Interval),video loss ignore(Camera Loss),display resolution.

(1) Main display switching interval (Main Interval) is referred as the setup of the interval between the switching of the main displaying screen.

**Setting Method:** press the Arrow Keys to select main display switching interval (Main Interval) column, press PTZ key to pop up the drop-down menu, finally, press the PTZ key to apply the selected intervals. The optional numerical value indicates (1/2/3/5 second etc. ), the default value is 2 seconds.

(2) SPOT Switching Interval (Spot Interval) is referred as setup of the interval between the switching of the SPOT displaying screen.

**Setting Method :**

Press the Arrow Keys to select SPOT switching interval(Spot Interval) column, press PTZ key to pop up the drop -down menu, press the Arrow Keys to select the intervals, then press PTZ key to apply the selected intervals. The optional numerical value indicates (1/2/3/5 second etc. ), the default value is 2 seconds.

(3) Video Loss Ignoring ( Camera Loss ) is referred as the skipping of the channel without video signal input.

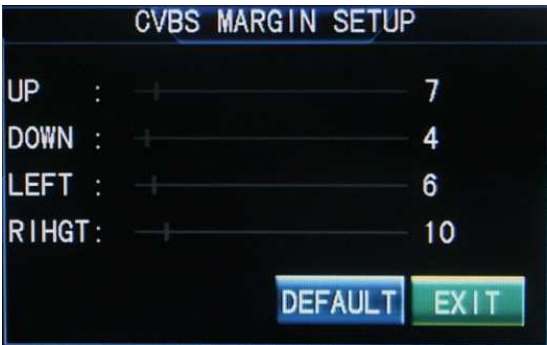
**Setting Method :** Press the Arrow keys to select video loss ignoring （Camera Loss） column, then press PTZ key to pop up the drop-down menu, press the arrow key to select on/off, press PTZ key to apply the selected settings. If the setting is on, then the channel without video input will be skipped. While the setting is off, all the channels will be displayed whether any video input or not.

(4) Display Resolution: the resolution setup of VGA or CVBS output port

**Setting Method :** Press the Arrow Keys to select display resolution(Resolution) column, press PTZ key to pop up the drop -down menu, press the Arrow Keys to select the video output resolution, then press PTZ key to apply the selected settings.



Picture 4-41



Picture 4-42

### 4.7.8 Log Search

Click "Main Menu"→ "Log " to enter the interface as shown in Picture 4-34

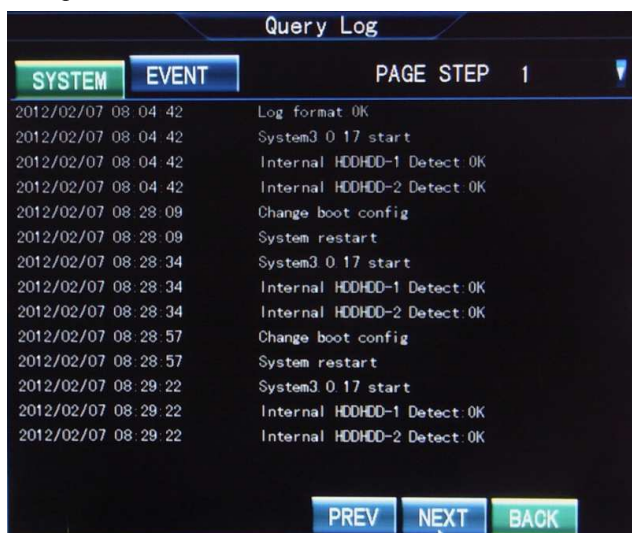
The login and startup of the device would leave a log message. Users could check the log information.

#### 1. System Log

The system log indicates: the record of the normal start, local system login, remote login, system updating.

### Setting Method:

- (1) In the system log interface, press the arrow keys to select the category query column, press PTZ key to pop up the drop down menu, then press the arrow keys to select the queried log type, press the PTZ key to apply the settings.
- (2) Setup of the queried time: press the arrow keys to select search button, press PTZ button to enter log list interface as shown in the below picture



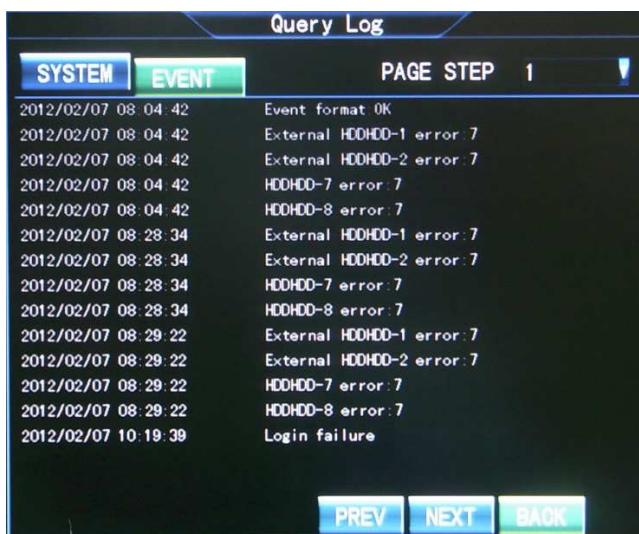
Picture 4-43

## 2. Event Log

Event log indicates: the records of triggered event deletion, video loss, linkage alarm, dynamic detection, wrong password, HDD error.

### Setting Method:

- (1) In the system log interface, press the arrow keys to select the category query column, press PTZ key to pop up the drop down menu, and then press the arrow keys to select the queried log type, press the PTZ key to apply the settings.
- (2) Setup of the queried time: press the arrow keys to select "search" button, press PTZ button to enter log list interface as shown in the above picture.





## Chapter 5 IE and Client Software Login

### 5.1 IE Plug-in download and installation

Open your web browser, enter the IP address and web port of DVR. Enter "http://192.168.1.220:8000" then press ENTER key, if your computer is connected to internet, you will be prompted to download and install "Active X Control"

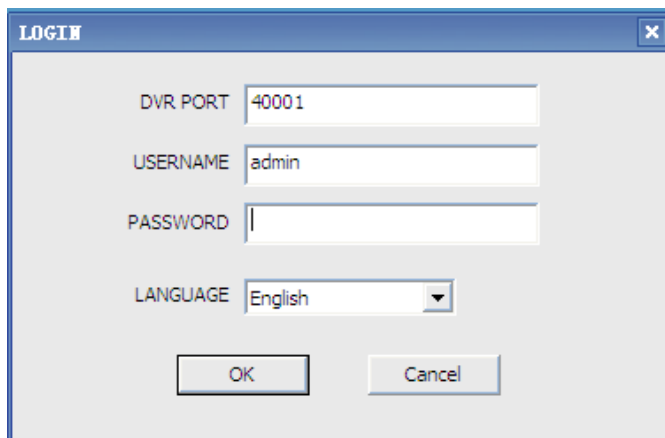
#### Notice

Unable to download the plug-in problem

1. Please check if the safety levels or firewall setting are set too advanced.
2. Select IE Tools→ Internet Option to enter the security interface, click the custom levels and set the "downloading unsigned Active X plug-in" Options as "prompt" click "OK" button to exit.

### 5.2 IE Login

After the plug-ins installation, (the login interface as shown in picture 5-1)enter the port, user name and password, then click "LOGIN" to view DVR remotely.


















Picture 5-1

The successful login leads to live preview interface as shown in picture 5-2. Click the right mouse button into "preview control" to choose channel number to have the video link.



Picture5-2

Indicator	Function	Indicator	Function
LIVE	live		Intercom
PLAYBACK	Play back menu		Record
SETUP	Setup menu		Auto
	1x1		Up,Down,Left,Right
	2x2		ZOOM
	3x3		FOCUS
	4x4		IRIS
	Full screen		PRESET
	Snap		CALL PRESET

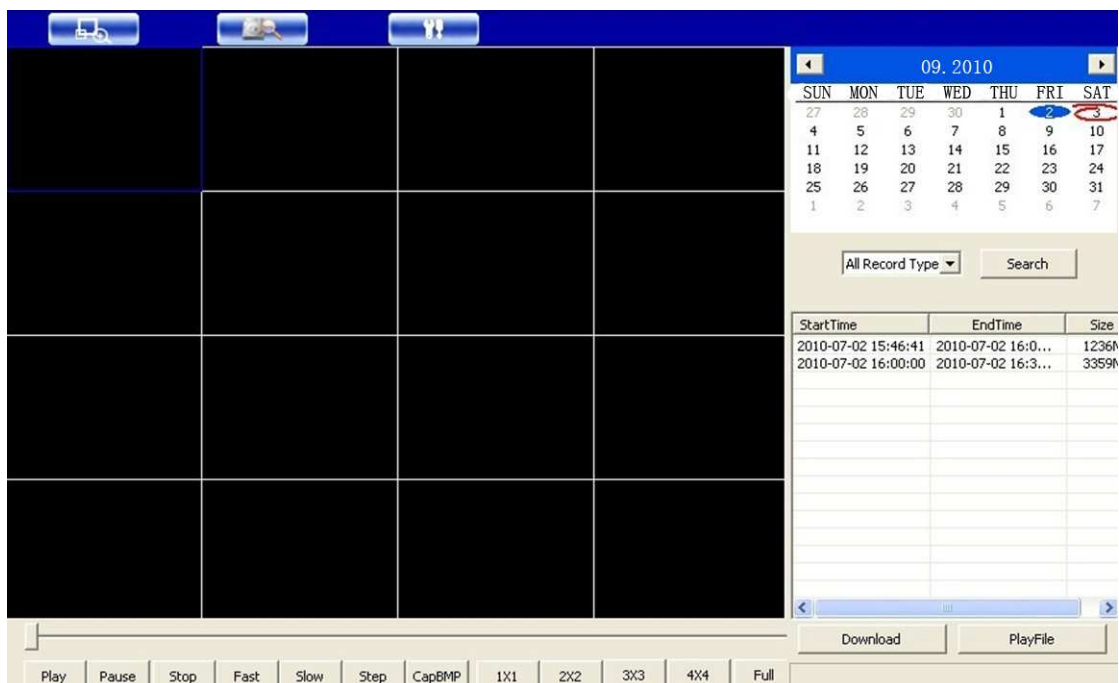
## 5.3 IE interface

After logging in the client end successfully, the interface is as shown in picture 5-2

### 5.3.1 Menu Bar

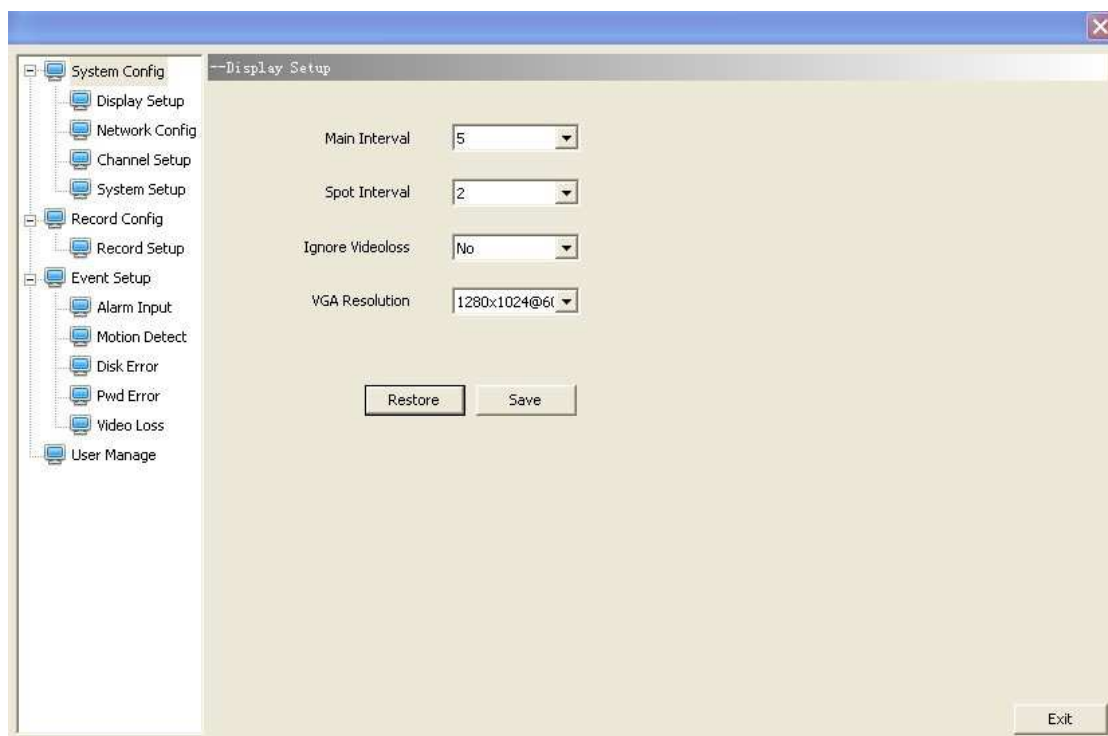
Preview: After PC client end log in the system, enter the default live preview interface as shown in picture 5-2

Retrieval: Click "Retrieval" to review the DVR video files remotely and select to play some files. Click "Retrieval" after selecting the date and record type, and then select the event play in the event lists of the search results, meanwhile, use the play control bar at the bottom of the interface to control. As shown in picture 5-3, users could pause, stop, fast forward, slow play of the selected files. To download the retrieval files, tick and select the files ,then click "download" button, the files saving path is set in the local setting interface as shown in picture 5-5.



Picture 5-3

**Setup:** Click "setup" to pop up secondary menu: remote configuration and local configuration.  
select the remote configuration, as shown in picture 5-4



Picture 5-4

---

**Notice**

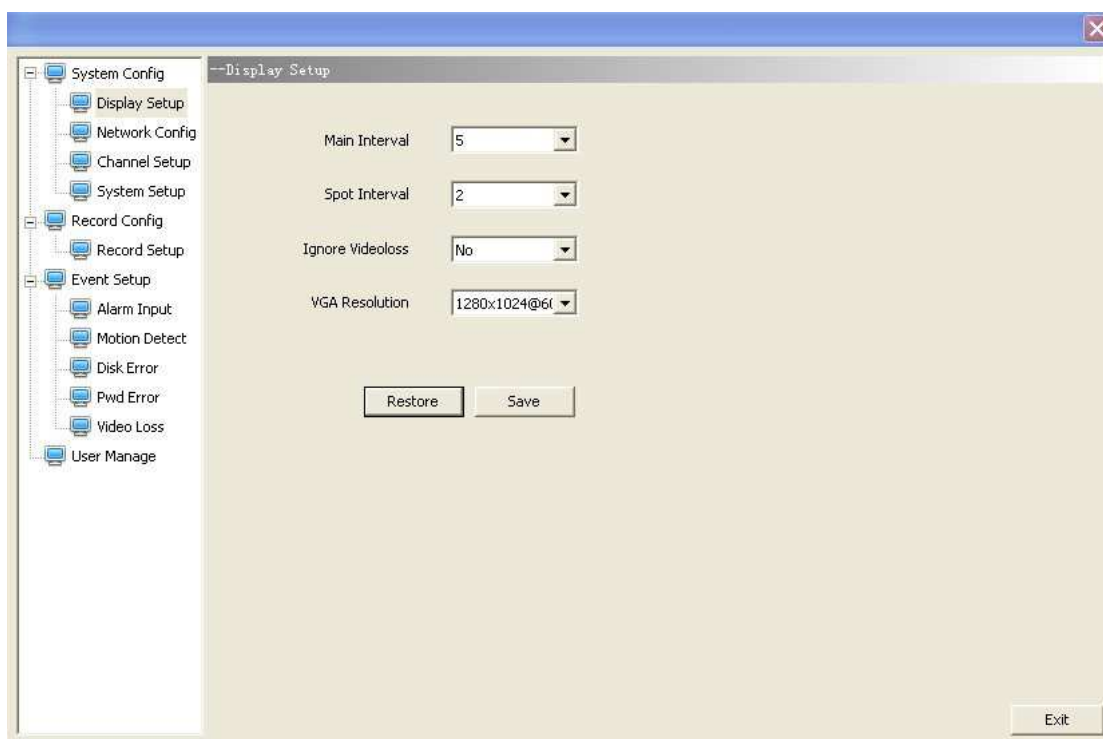
Only when DVR is in the preview main interface, its parameters can be modified remotely. The settings come into effect after the parameter savings are submitted to DVR end. The parameter modification in IE is consistent with the same modification in DVR end.

---

The remote configuration interface mainly indicates system configuration, recording configuration, events configuration, User Manage.

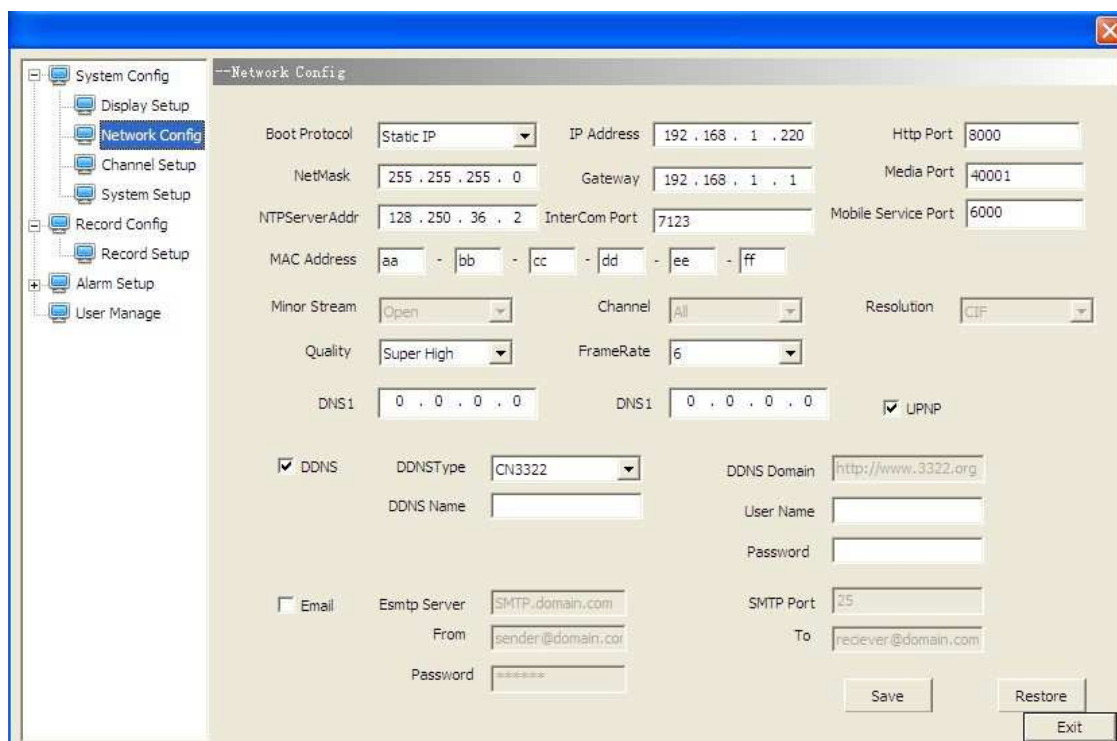
a. System configuration includes display setting, web setting, channel setting, log query, system setting. Click "System Configuration"→ "Display Setting" to enter display setting interface as shown in the below picture. Users can set the main display switching time, SPOT switching time, HDD loss ignoring, display resolution and OSD output device in the interface.

Setting Method is the same with that of DVR, please refer to 4.7.7.



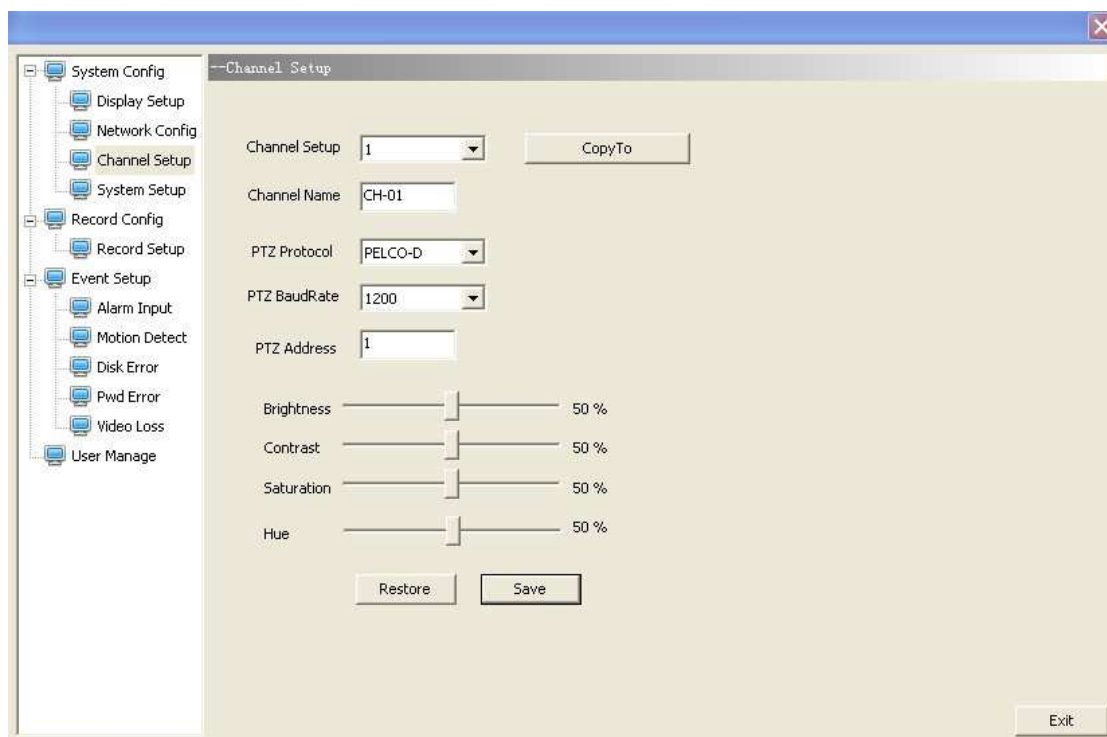
Picture 5-5

Click "System Configuration"→ "Web Setting" to enter web setting interface as shown in below picture. Users can set the network mode in the interface; the relevant parameters are consistent with those of DVR end. Please refer to 4.7.4.



Picture 5-6

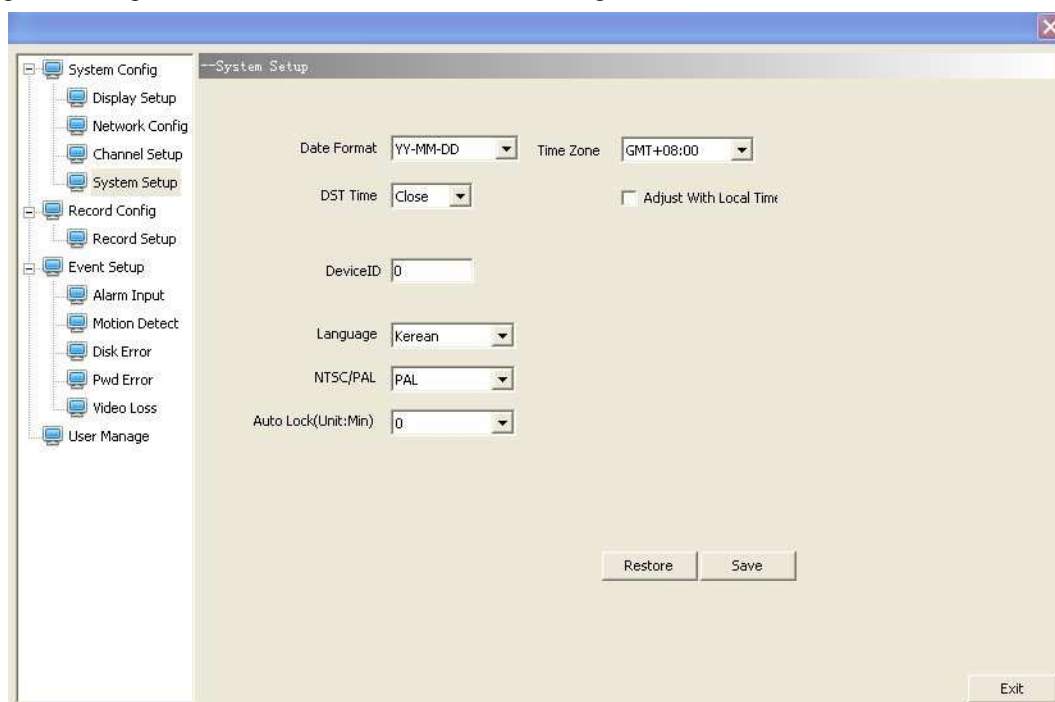
Click "System Configuration"→ "Channel Setting" to enter channel setting interface as shown in below picture. Users can set the channel name, PTZ protocol, PTZ Baud rate, PTZ address and the color in the interface. The Setting Method is consistent with that of DVR end.



Picture 5-7

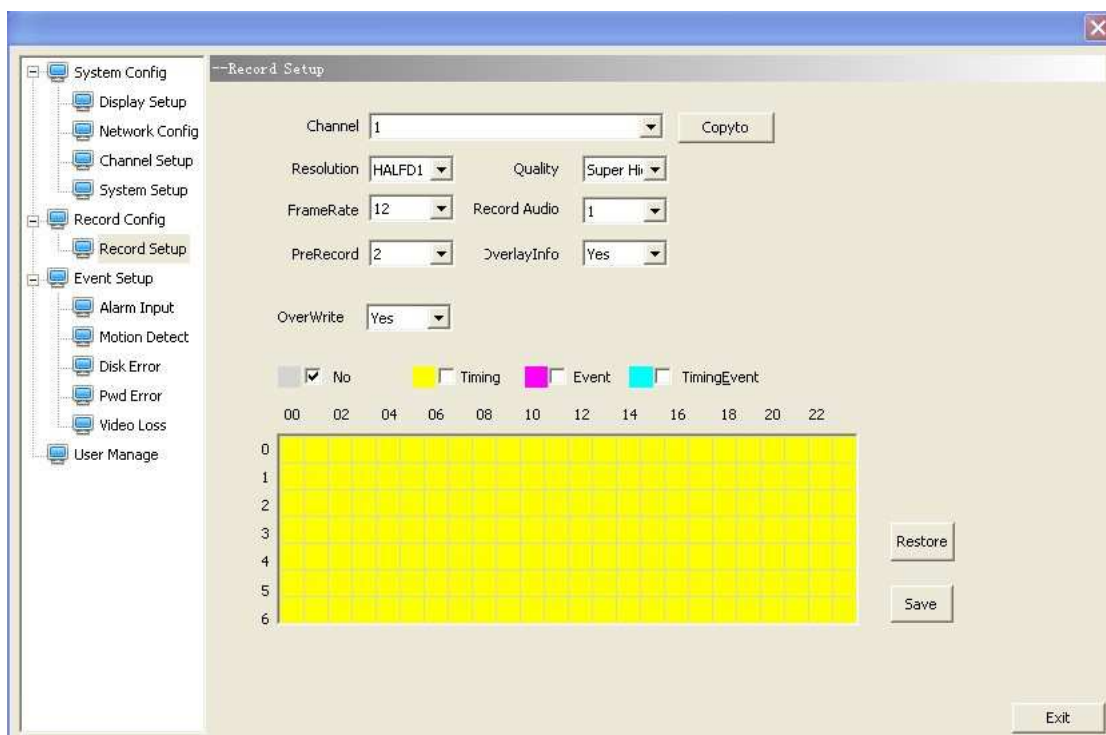
Click "System Configuration"→ "System Setting" to enter log query interface as shown in below picture.

Users can set system date format, time zone, system time setting, daylight saving time, device ID, system language, format option, auto lock in this interface. The Setting Method is consistent with that of DVR end.



Picture 5-8

The recording configuration includes recording setting and recording schedule. Click "Recording Configuration"→ "Recording Setting" to enter recording setting interface as shown in below picture. Users can set recording resolutions, definition, frame rate, sound recording, pre-recorded frame rate, superposition information and cycle covering in this interface. The Setting Method is consistent with that of DVR end. Please refer to 4.7.1 Basic Setting.

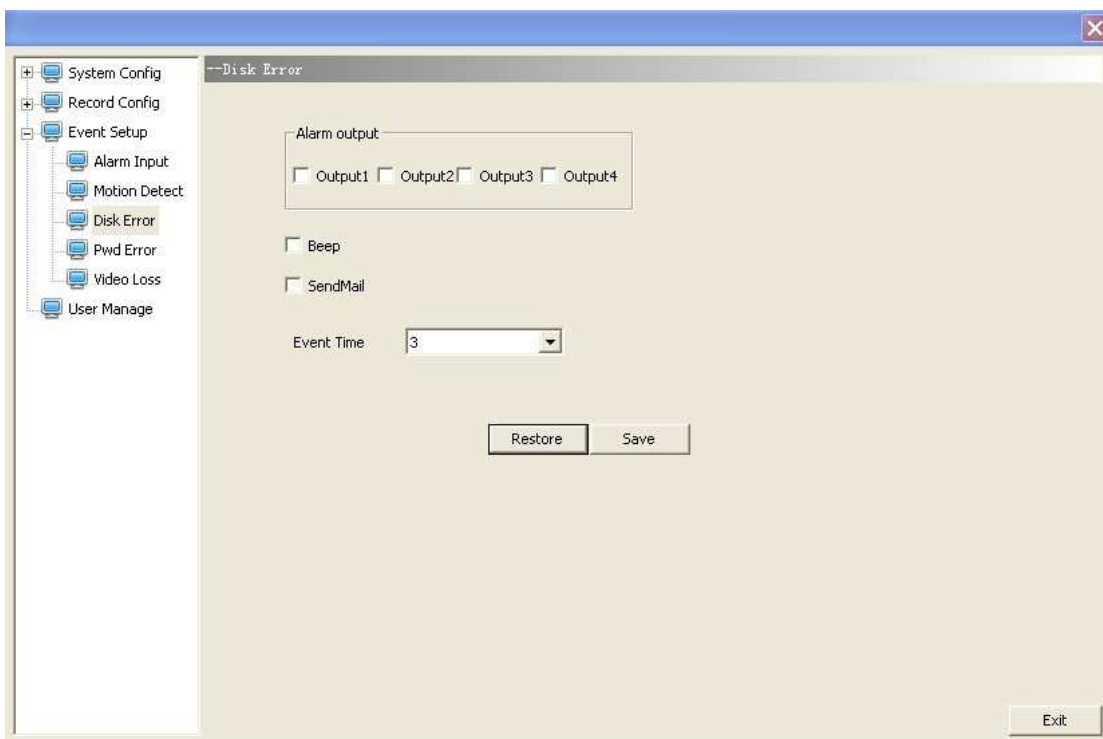


Picture 5-9

Click "Recording Configuration"→ "Recording Schedule" to enter recording schedule interface as shown in below picture. The recording schedule is mainly set to the recorder. The Setting Method is consistent with that of DVR end. Please refer to 4.7.1Recording Schedule.

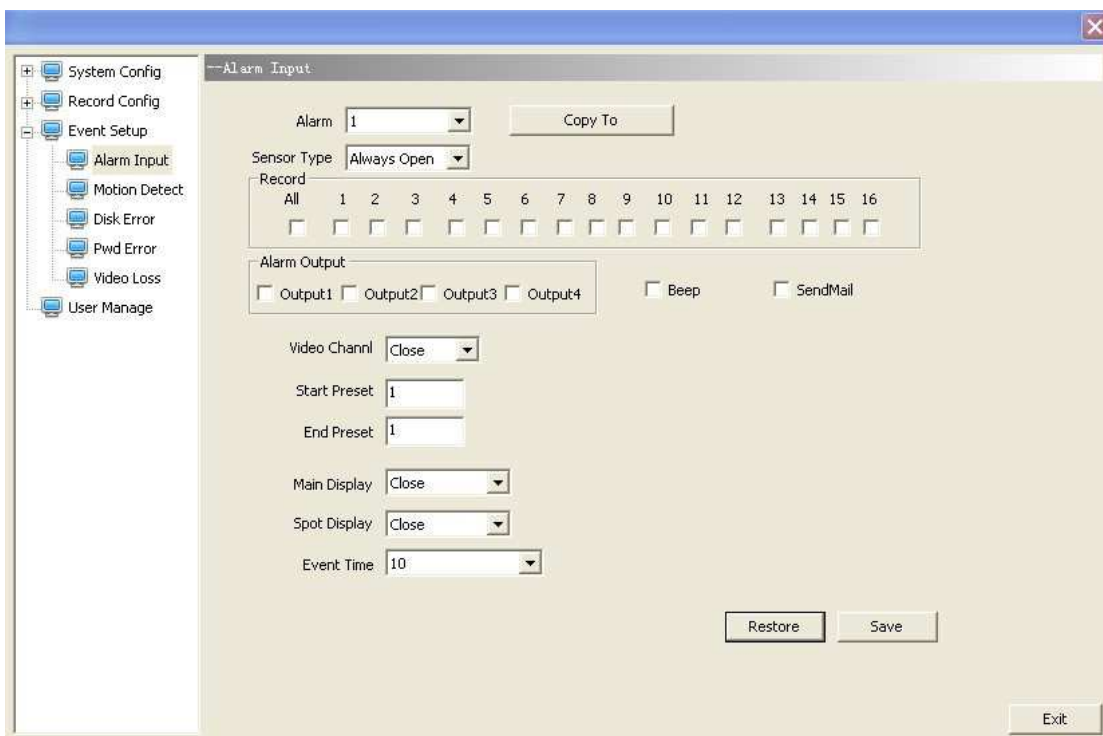
b. Event configuration interface mainly indicates HDD error, password error, video loss, alarm input, motion detection. The HDD error, password error and video loss interfaces are almost consistent shown as the below picture.





Picture 5-10

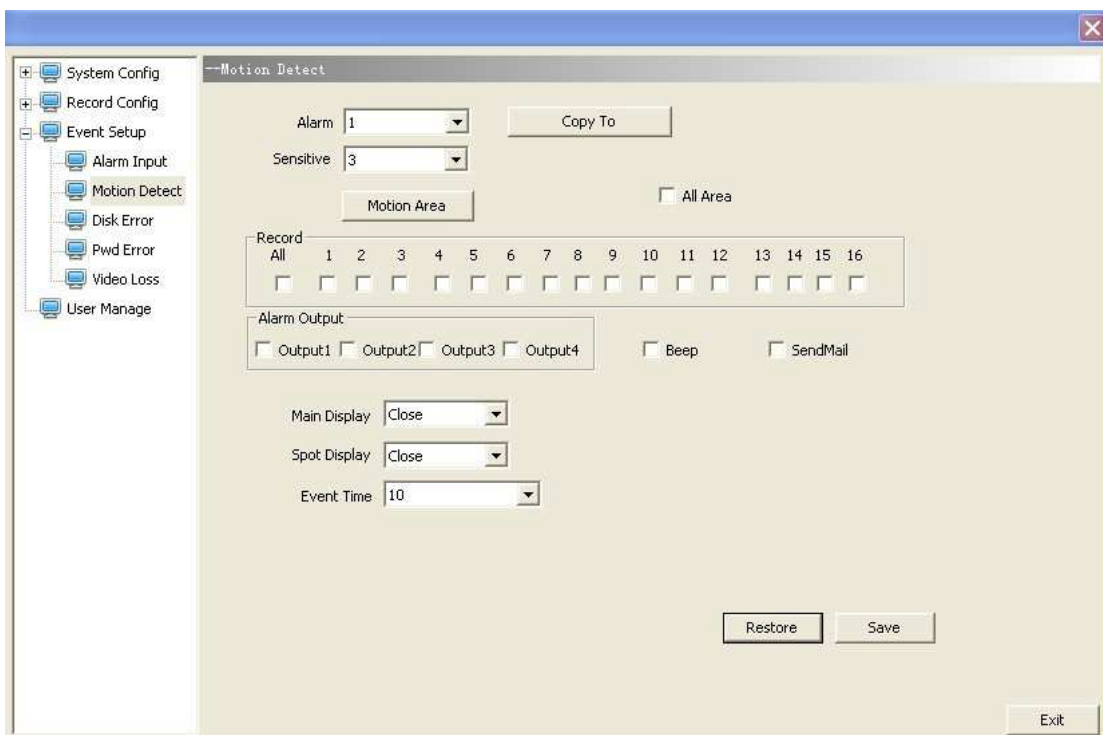
The alarm input interface is as shown in the below picture.



Picture 5-11

The motion detection interface is as shown in the below picture.

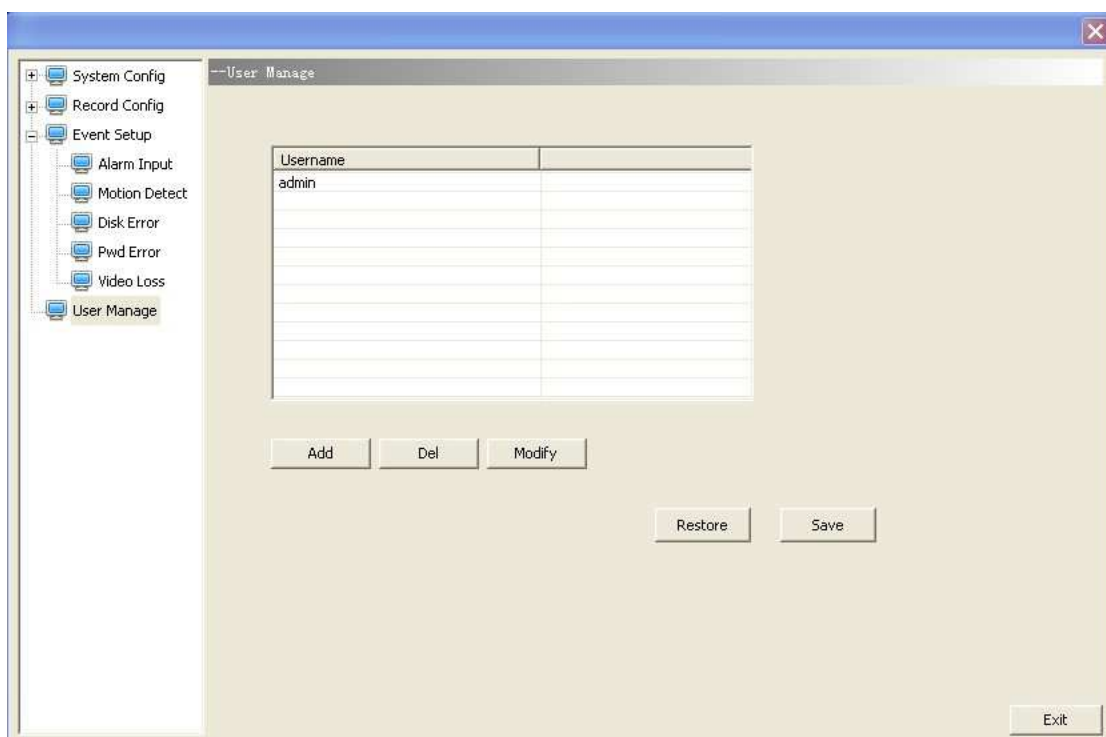




Picture 5-12

- c. User Management indicates the adding, deletion and modification of the users.

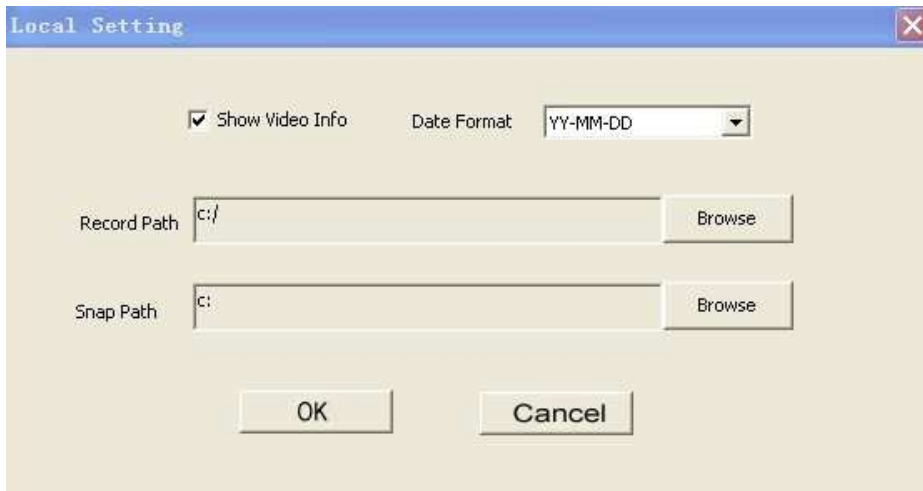
User management interface is as shown in the below picture.



Picture 5-13

The above Setting Method of the interface is consistent with that of DVR. Please refer to the Setting Method of DVR.

Select the local configuration, the interface is as shown in picture 5-14



Picture 5-14

The local configuration includes spot overlay characters, record path and snap path

- A.Live overlay characters indicate the displaying channel name set during the live preview.
- B.The record path indicates the saving path of the downloading record videos
- C.The snap path indicates the saving path of the screenshot images.

### 5.3.2PTZ Control

---

PTZ Control: the zoom, focus and iris control of PTZ.As shown in picture 5-2.

### 5.3.3 Video Switch

---

Under the state of live preview, the preview screen can be split by pressing the switch button of video window. It supports single screen, four screens, nine screens, 16 screens and full screen operation. As shown in picture 5-2.

### 5.3.4 Playback

---

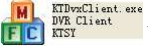
Under the state of live preview, click the "Playback" button to enter record query interface. Click "seach" button after selecting the date and type of the files. Then select the particular event in the searched event lists to play. Meanwhile, users can operate the play control bar at the bottom of the screen to control (as shown in picture5-3) the pause, stop, fast forward, slow forward and so other operations. During the course of playback, the screen could be split. The device support single screen, four screens, nine screens, sixteen screens and full screen playback at present.

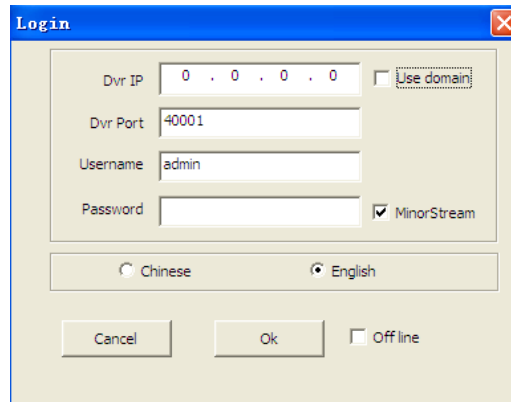
### 5.3.5 Snapshot

---

Under the state of live preview, click the "snapshot" botton,Can operate the snapshot of the current previewed picture. As shown in picture 5-2 .

## 5.4 Client software login

Pls open the file "player.exe" (  ) in the CD Files, the interface is as shown in the following image:



**User Name:** DVR User Name(Default User Name is admin)

**Password:** DVR Password(Default is 00000000)

**Minor Stream:** After ticking ☒ in this option, the stream of the system transfer is minor Stream. Otherwise, it is main stream.

**Language:** Language Options, Support Chinese and English

**Offline:** Offline Play Function

The operation interface of the Client Software after logging is just the same of the interface on IE end. Pls just refer to the setting and operation method of IE

## Chapter 6 Trouble shooting

### 1. What can I do if the system cannot detect the HDD?

A: Check if the power supply system is properly connected and data cable and power cables accurately connected.

### 2. We have changed the password but do not remember the new password, how can we access the system?

A: If you forget system password, please consult with the service personnel. Setting a easy-to-remember and safe password is much recommended. (If any security requirements, please do not try to set the simple passwords such as 000000)

### 3. We are not getting any video signal on the DVR, what is wrong?

A: Check camera video cable and connections; or check monitor video cable and connections; or confirm that the camera has the power and / or check camera lens setting.

### 4. What is the affect to equipment by DVR's heat?

A: The DVR has a fan to help it dissipate heat while it is running. Please place the DVR in a place where there is good air circulation and away from heat sources to increase stability and life of the DVR.

### **5. Why the Remote Controller can't work normally?**

A: If the controller is pointing to the IR signal on equipment front panel, but the operation is still invalid, please check the batteries in remote controller, if above problems are excluded, please check the health of the remote controller

### **6. When my PC HDD is installed into DVR, does it work?**

A: It works as long as the DVR system supports the HDD. But note that the data of the HDD will be lost when DVR is operating.

### **7.Can we record while playing-back?**

A: Yes, you can do it. The system supports that you record while playing-back.

### **8.Can we erase some recorded file from DVR?**

A: Considering the safety factor, you can't delete the recorded file directly from the device. When you actually erase all the recorded files, please select HDD format function

### **9.Why can't login DVR client end?**

A: Please check if the web connection configurations are all right and the RJ-45 interface connection is ok. Or when the web password switch is on, check if the account and password are right or not.

### **10. There is drag mark on screen when real-time monitoring in client end, even short delay?**

A: It's normal if less than 5 seconds;

### **11. Cannot find any information record during the playback?**

A: please check the harddisk data cable connection, and whether system time is adjusted illegally. Try it several times, and test whether the harddisk is damaged if above still appears.

### **12. DVR cannot control the PTZ after setup?**

A: Please test for the following reasons:

- ① Front PTZ failure
- ② PTZ decoder setting, connection and installation is incorrect
- ③ PTZ incorrect setup in the DVR
- ④ PTZ protocol decoder and DVR does not match each other
- ⑤ PTZ decoder and DVR address does not match each other
- ⑥ When multiple decoders are connected, 120 ohm resistance is needed on the most remote end of PTZ decoder AB line, to eliminate reflex and impedance matching, or PTZ control will not be stable.

### **13. Motion detection does not work?**

A: Check the motion detection time and motion detection zone and make sure that they are right setup, and check the sensitivity setting.

### **14. Alarm does not work?**

A: Check the correctness of alarm setting and alarm connection, and make sure that alarm signal input is correct.

### **15. Why does the Buzzer keep sounding?**

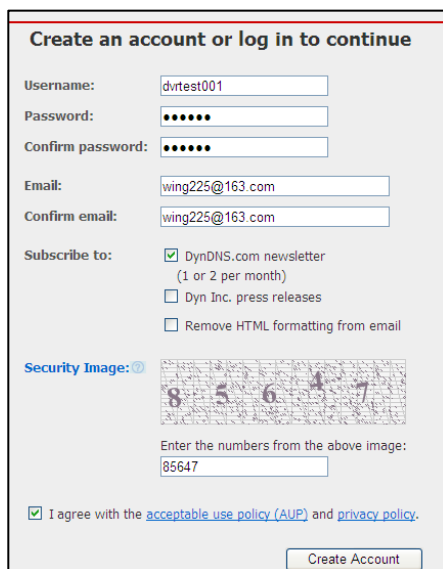
A: Please check if motion detection is on and the system has detected motion, make sure the HDD is being detected and has sufficient space available; check if video has lost etc.

## **Appendix 1 Domain name application**

- 1) Create account

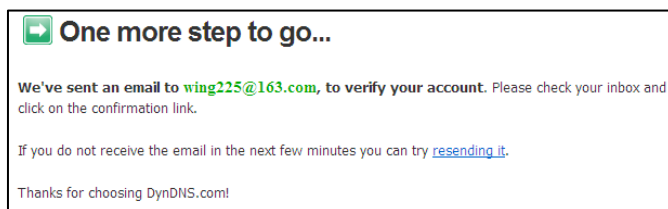
First open [www.dyndns.com](http://www.dyndns.com), and click the Create Account option:

Fill in the account information.



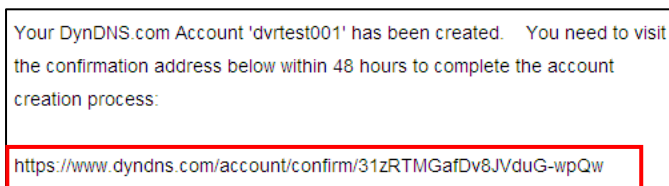
The screenshot shows the 'Create an account or log in to continue' form on the DynDNS website. The form includes fields for Username (dvrtest001), Password (masked with dots), Confirm password (masked with dots), Email (wing225@163.com), and Confirm email (wing225@163.com). There are checkboxes for 'Subscribe to:' including 'DynDNS.com newsletter (1 or 2 per month)' (checked), 'Dyn Inc. press releases' (unchecked), and 'Remove HTML formatting from email' (unchecked). A 'Security Image' section shows a grid of numbers (8, 5, 6, 4, 7) with the instruction 'Enter the numbers from the above image:' and a text input field containing '85647'. At the bottom, there is a checkbox for 'I agree with the acceptable use policy (AUP) and privacy policy.' and a 'Create Account' button.

After confirmation, the system will prompt that the verification message has been sent to the designated mailbox, as shown below:



## 2) Activate account

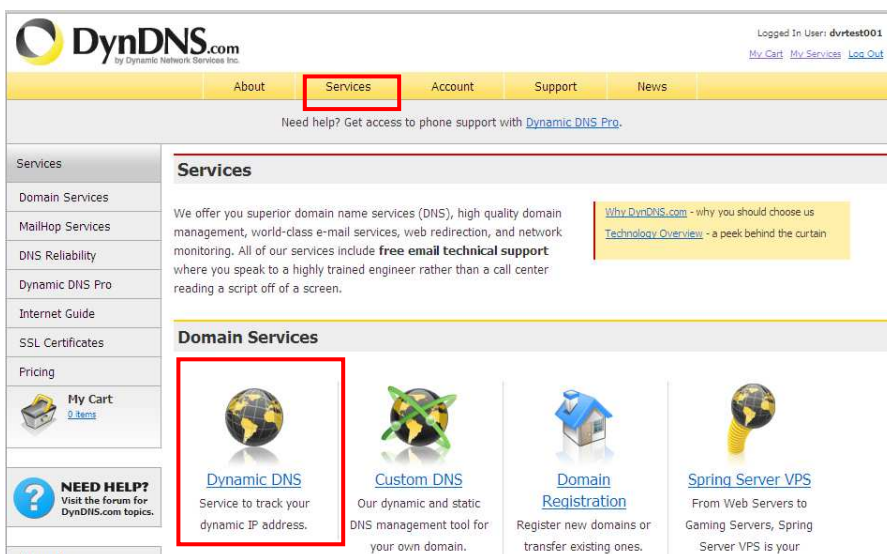
Log in your mailbox and open the confirmation link sent from [support@dyndns.com](mailto:support@dyndns.com), as shown below:



Click the link below and enter the website to activate the account.

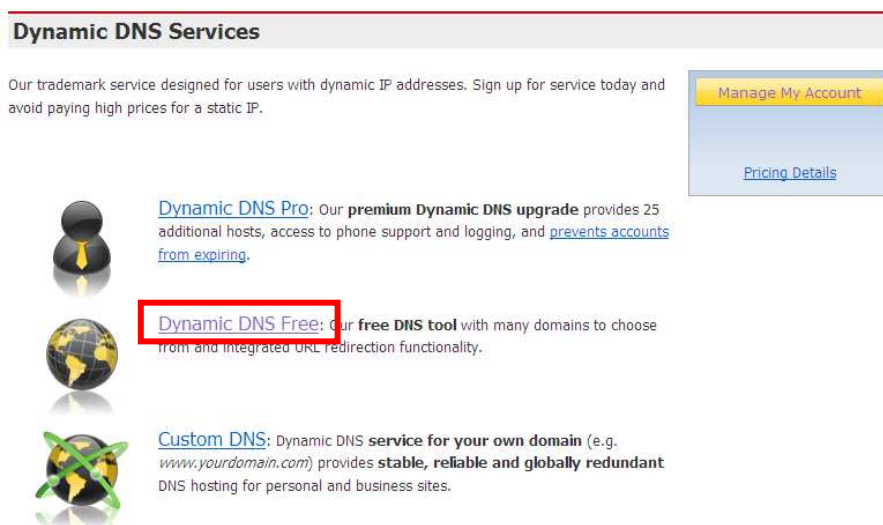
## 3) Login

After successful activation, open the home page <http://www.dyndns.com/> to log in. After successful login, click “Services” → “Dynamic DNS”, as shown below:



#### 4) Application for free domain name

After entering the “Dynamic DNS Services” screen, click “Dynamic DNS Free” to apply for a free dynamic domain name, as shown below:



Enter the “Dynamic DNS Free” screen, as shown below. Click

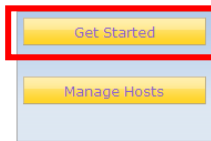
“ [Get Started](#) ”.

## Dynamic DNS Free

Dynamic DNS Free (DDNS) allows you to create a hostname that points to your home or office IP address, providing an easy-to-remember URL for quick access. We also provide an update mechanism which makes the hostname work with your dynamic IP address. **We continue to offer this service free** to the Internet community as we have done so **for nearly 10 years**.

### Capabilities and Features

- Get five (5) hostnames in [88 available domains](#) for free.
- Forward web requests or mark host offline for maintenance or downtime.
- Configure MX records for flexible mail routing.
- Update host using [ddns update clients](#) for a wide variety of platforms.
- Modify DNS TTL values for fast propagation or reliable static IP caching.
- Deliver your DNS records to 5 DNS servers in 5 tier-1 datacenters around the globe.
- Query volume up to 648,000 queries/month



### Screenshot



Enter the hostname, select the service type and then enter the dynamic IP address (usually being the dynamic IP address of the network of the DVR host) to be tied in the Add New Hostname screen, as shown below. Complete the application for the dynamic domain name as prompted.

## Add New Hostname

[↑ Host Services](#)


Note: You currently don't have any active [Dynamic DNS Pro upgrades](#) in your account. You cannot use some of our Host Service features. Paying for an Dynamic DNS Pro upgrade will make this form fully functional and will add several other features.

Hostname:	<input type="text" value="dvrtest001"/> . <input type="text" value="dvrddns.org"/>
Wildcard Status:	Disabled <a href="#">[Want Wildcard support?]</a>
Service Type:	<input checked="" type="radio"/> Host with IP address <a href="#">[?]</a> <input type="radio"/> WebHop Redirect <a href="#">[?]</a> <input type="radio"/> Offline Hostname <a href="#">[?]</a>
IP Address:	<input type="text" value="59.40.212.55"/> <a href="#">Use auto detected IP address 59.40.212.55.</a> <a href="#">TTL</a> value is 60 seconds. <a href="#">Edit TTL.</a>
Mail Routing:	<input type="checkbox"/> Yes, let me configure Email routing. <a href="#">[?]</a>
<input type="button" value="Add To Cart"/>	

## Shopping Cart

dvrtest001.dvrdns.org added to cart. **You must checkout to activate.**

Your cart contains **free services only**. You will not be asked for credit card information.

 **Upgrade Options**

Free accounts allow only five Dynamic DNS hosts.  
&bull; To add more and enjoy [additional benefits](#) for only \$15.00 per year, [purchase Dynamic DNS Pro](#).  
&bull; To get Dynamic DNS for **your own domain**, use [Custom DNS](#).

Dynamic DNS Hosts

<a href="#">dvrtest001.dvrdns.org</a>	-	<a href="#">remove</a>	\$0.00
---------------------------------------	---	------------------------	--------

Please enter coupons in the box below and click "Add Coupon".

[Add Coupon](#)

Sub-Total: \$0.00

Order Total: \$0.00

Would you like to [print an estimate/quote](#)?

[Next >>](#)

## Free Services Checkout

Once you have confirmed the contents of your cart your services will be instantly activated.

Service	Period	Price
Dynamic DNS Hosts		
<a href="#">dvrtest001.dvrdns.org</a>	-	\$0.00
Sub-Total:		\$0.00

[Activate Services >>](#)

## Host Services

[Add New Hostname](#) - [Host Update Logs](#)

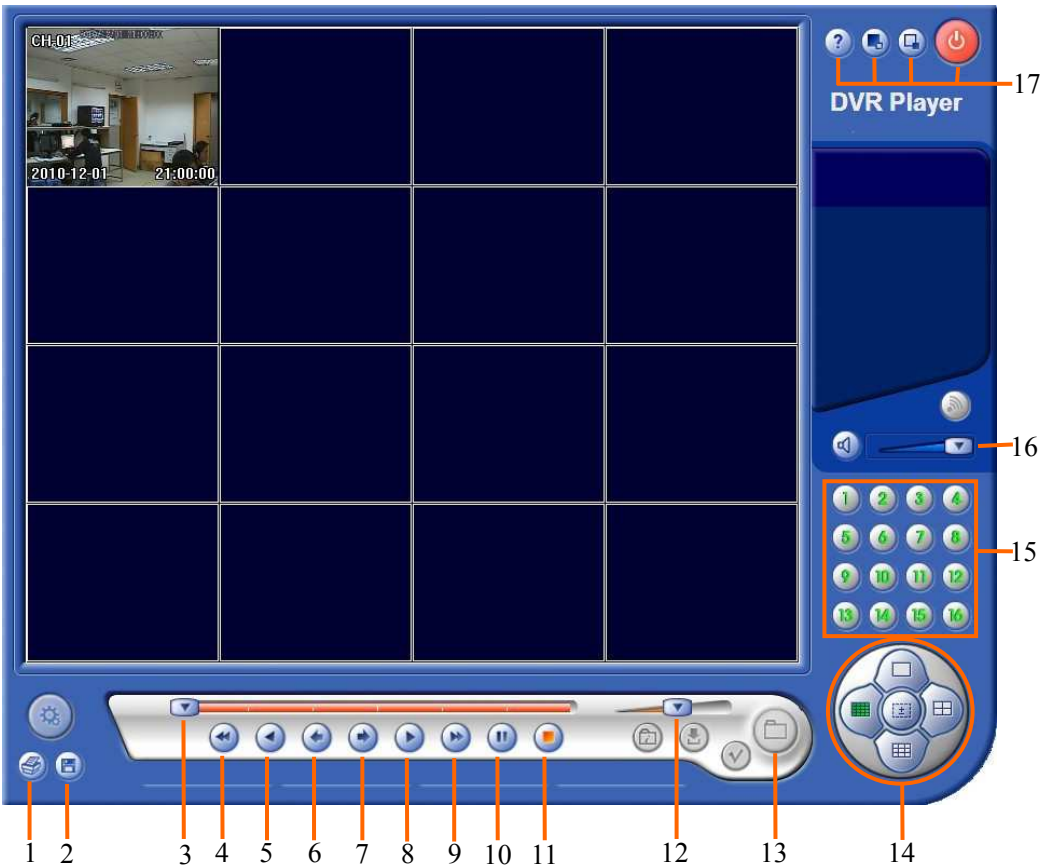
[dvrtest001.dvrdns.org](#) successfully activated.

Hostname	Service	Details	Last Updated
<a href="#">dvrtest001.dvrdns.org</a>	Host	59.40.212.55	Dec. 01, 2009 10:17 PM



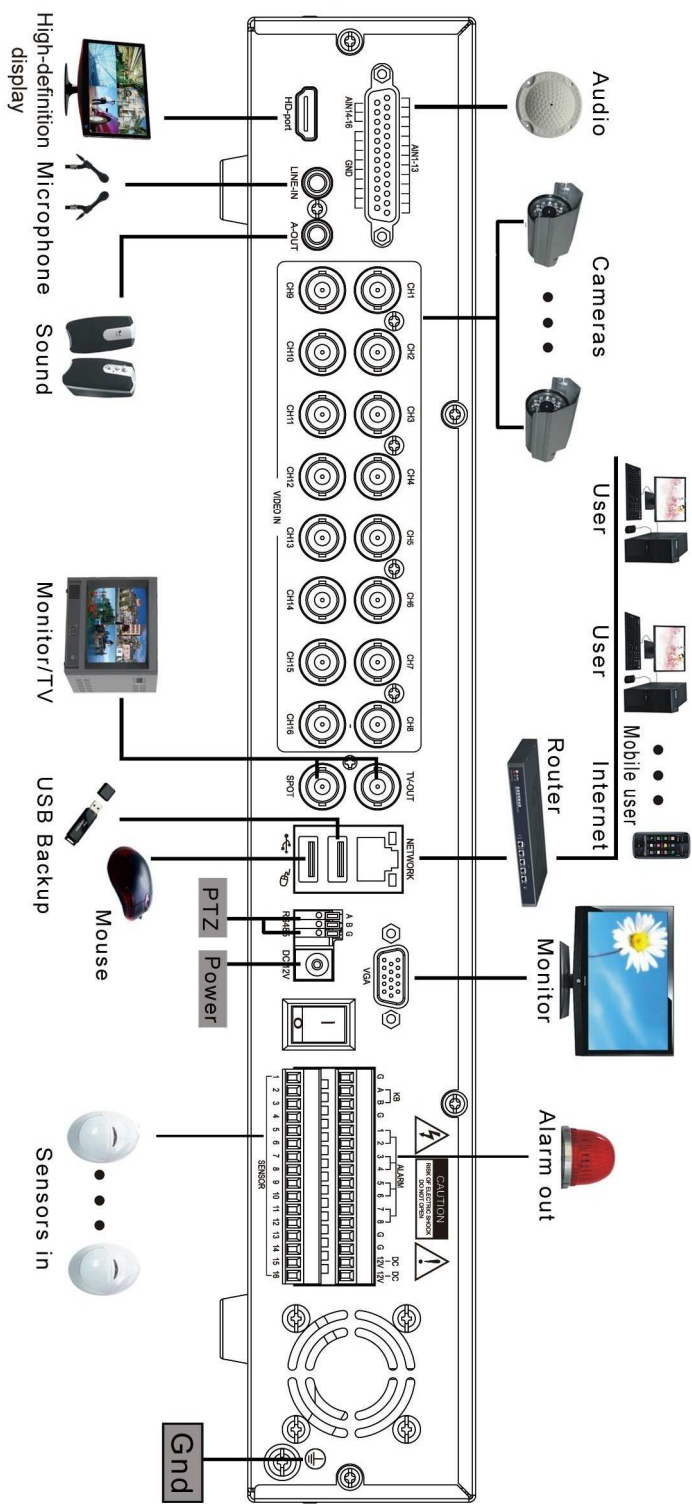
Appendix 2 Player

Pls open the file "player.exe"(  ) in the CD Files,the interface is as shown in the following image:



NO.	Function	NO.	Function
1	Image print	11	Stop
2	Image save	12	Play speed
3	Play bar	13	Open file
4	Fast backward	14	Display mode
5	Backward play	15	1~16 Channel
6	Step backward	16	Audio
7	Step forward	17	? :about
8	Play		⏏ :full screen
9	Fast forward		_ :minimize
10	Pause		⏻ :Exit

Appendix 3    System connection diagram



- ▲ Nothing contained in the manual attached to this product shall be duplicated, disseminated, transcribed or stored in any retrieval system or translated into any other language without written consent.
- ▲ The product specifications and information contained in this manual are for reference only, and the contents thereof are subject to updating without notice.
- ▲ We assume no responsibility for any damage arising from the improper use of this product. The product names mentioned in this manual are intended for identification only, and may also be registered trademarks or copyrights owned by other companies.
- ▲ The product color provided in this marketing package may differ from the color shown on the original package. The pictures are for reference only. The technical specifications are subject to change without notice. The accessories available may differ from market to market. Please consult your local dealer.
- ▲ This manual has been checked carefully but any spelling or technical error is not precluded. Such error or omission will be corrected in the new version. We have the right to modify any and all information contained in this manual without notice.